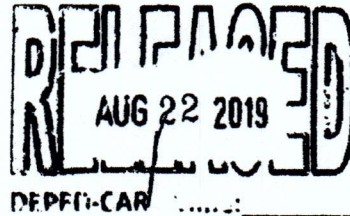




Republic of the Philippines
DEPARTMENT OF EDUCATION
CORDILLERA ADMINISTRATIVE REGION
Wangal, La Trinidad, Benguet



REGIONAL MEMORANDUM
No. 257.2019



August 19, 2019

**CONDUCT OF ORIENTATION ON THE COLLECTION OF
TEACHERS' IPCRF DATA FOR ESTABLISHMENTS OF BASELINE ON TEACHERS'
PROFICENCY LEVEL FOR SY 2018 – 2019 and 2019 – 2020**

**To: Regional Office
Schools Division Superintendents
All Divisions
All Others Concerned**

1. Pursuant to DM-PFO-2019-00495 entitled Collection of Teachers' IPCRF Data for Establishments of Baseline on Teachers' Proficiency Level for SY 2018 – 2019 and 2020, the Regional Office through the Human Resource Development Division (HRDD) shall be conducting a one (1) - day orientation on August 30, 2019 at the SNC Hall, DepEd – CAR Compound, Wangal, La Trinidad, Benguet.

2. The activity aims for the participants to:

- a. Be equipped with the different template forms to be used in the data collection of IPCR rating of teachers and procedures for IPCR data collection, consolidation and analysis.
- b. Enhance skills in consolidating the IPCR rating of teachers using the template forms.
- c. Ensures accuracy and completeness of data or documents to be submitted.

3. Attendance to this significant activity is highly expected from the following:


Designation	Pax per Division	Total Number of Pax
A. Schools Division Offices		
HRD Senior Education Program Specialist (SEPS)	1	8
Information Technology Office (ITO)	1	8
SGOD Chief or EPS	1	8
B. Regional Office		
Regional Office ITOs	-	3
HRDD and FTAD	-	4
TOTAL		31

4. Enclosure 1 is the program of activity and DM-PFO-2019-00495 for your reference.
5. Participants are advised to bring their own laptop and extension cords.
6. Accommodation and meals will be charged to Regional HRTD Fund while travel expenses and other meals not covered within the training duration will be charged to local funds subject to the usual accounting and auditing rules and regulations.

Provision of Meals and Accommodation

	Day 0 August 29, 2019	Day 1 August 30, 2019
Breakfast		/
AM Snack		/
Lunch		/
PM Snack		/
Dinner		/
Accommodation	/	

7. All concerned personnel are required to attend the said activity. Failure to attend will oblige the personnel to pay the total amount allotted per participant for this activity. SDSs are accountable for the complete attendance of all personnel from their respective Offices.
8. Immediate dissemination of and strict compliance to this Memorandum is directed.


MAY B. ECLAR, Ph.D., CESO V
 Regional Director
 8/12/19

PROGRAM OF ACTIVITY FOR THE ORIENTATION ON THE COLLECTION OF TEACHERS' IPCRF DATA FOR ESTABLISHMENT OF BASELINE ON TEACHERS' PROFICIENT LEVEL SY 2018 – 2019 AND SY 2019 – 2020

Terminal Objectives: After this one-day orientation, all the participants are expected to be equipped with the different template forms to be used in the data collection of IPCR rating of teachers and procedures for IPCR data collection, consolidation and analysis, enhanced skills in consolidating the IPCR rating of teachers using the template forms, and ensured accuracy and completeness of data or documents to be submitted

August 30, 2019

Time	Session Title	Session Objective/s	Methodology	Expected Output	Facilitator	Remarks
8:00 – 8:30	Opening program and Statement of Purpose					
8:31 – 9:00	RPMS Data Collection System: Context and Rationale	For the participants to be aware on the conduct of this activity	Discussion	Enlightened on the establishment of RPMS Data Collection System	Denia O. Tarnate	
9:01 – 10:00	The RPMS IPCRF Data Collection System: Roles and Responsibilities of Users and Forms to be used	For the participants to be oriented on their roles and responsibilities and forms to be used for the RPMS IPCR Data Collection System	Discussion	Enlightened on their roles and responsibilities as and the different IPCRF data gathering forms	Charline T. Balahyas	
10:01 – 12:00	IPCR Data Collection Workshop 1: Hands – on Simulation	For the participants to be equipped on how to encode the IPCR ratings of teachers using the IPCRF Rating Collection Form	Discussion Hands – on activity/Workshop	Soft copy of sample collected IPCR rating of teachers using the IPCRF Rating Collection Form	Charline T. Balahyas	
12:01 – 1:00	Lunch Break					
1:00 – 3:30	Consolidation & Submission of IPCRF Data Across Governance Levels Workshop 2: Hands-on Simulation	For the participants to be guided on the consolidation and submission process of IPCRF Rating	Discussion Hands – on Activity/Workshop	Soft copy of Consolidated and Submitted IPCR Rating	Vandolph B. Flora/Glenn Papa	

3:31 – 4:30	Use and Analysis of Consolidated IPCRF Data	For the participants to identify the L and D/professional development needs of teachers using the consolidated IPCRF Data	Discussion	List of L & D/Professional Development Needs	Denia O. Tarnate	
4:31 – 5:30	Making of Action Plan for the SDO Roll Out to School Heads					
5:31 – 6:00	Ways Forward and Closing Program					



Republic of the Philippines
Department of Education

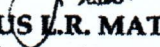
Tanggapan ng Pangalawang Kalihim

Office of the Undersecretary

MEMORANDUM

DM-PFO-2019-00495

FOR: Minister of Basic, Higher, and Technical Education, BARMM
Regional Directors
Schools Division Superintendents
Public Elementary and Secondary School Heads
All Others Concerned

FROM: 
JESUS L.R. MATEO
Undersecretary

SUBJECT: *Collection of Teachers' IPCRF Data for Establishment of Baseline on Teachers' Proficiency Level for SY 2018-2019 and SY 2019-2020*

DATE: 04 June 2019

Pursuant to the stipulation in DepEd Order No. 42, s. 2017 entitled "National Adoption and Implementation of the Philippine Professional Standards for Teachers (PPST)" that all performance appraisals for teachers shall be based on the PPST, the Department of Education (DepEd), through the Bureau of Human Resource and Organizational Development (BHROD), undertook the development of results-based assessment tools in 2018 to align the performance appraisal of teachers embedded in the Results-Based Performance Management System (RPMS) with the PPST. This alignment creates a systematic, objective, and constructive means for assessing teacher performance, identifying capability needs, and providing support for professional development.

The first set of the PPST-aligned RPMS assessment tools were implemented in all 17 regions through a series of trainings for teachers and school heads in 2018. These tools, covering the first 12 PPST indicators, being rolled out for SY 2018-2019 and SY 2019-2020, are as follows:

1. RPMS Tools for Teacher I-III (Proficient Teachers) and Master Teacher I-IV (Highly Proficient Teachers)
2. Classroom Observation Tools (COT) for Teacher I-III and Master Teacher I-IV
3. Electronic Self-Assessment Tools (SAT) for Teacher I-III and Master Teacher I-IV

The PPST-based RPMS assessment tools are found in the RPMS Manual. The latest version can be accessed at <http://deped.in/RPMSManualver2019>.

To better support the continuous professional development of teachers based on the PPST, BHROD seeks to establish baseline data on teachers' proficiency level on the first 12 PPST indicators. In this connection, all public schools are directed to submit data consolidated from teachers' Individual Performance Commitment Review Forms (IPCRF) for SY 2018-2019. Encoding of IPCRF ratings into the template forms shall start in the 2nd week of June 2019 and shall end in the

BHROD-HRDD/Rosero

last week of August 2019. Please see the herein attached data collection guide (see Annex 1), for reference.

The following officials/personnel shall be responsible for data collection at each governance level:

Table 1. Matrix of Responsibility

Governance Level	Focal Office/Person	Task	Schedule of Data Collection & Submission	
			Start	End
Small Schools	School Head	Encoding and consolidation of IPCRF rating of teachers	2nd week of July 2019	4th week of August 2019
Medium & Large Schools	Department Head	Encoding of IPCRF rating of teachers		
		School Head	Consolidation of IPCRF rating of teachers	
Schools Division Office (SDO)	Human Resource Development Section (SDO-HRDS), School Governance and Operations Division (SGOD) Chief	Consolidation of IPCRF Data Consolidation Forms submitted by schools	4th week of August 2019	1st week of September 2019
Regional Office (RO)	Regional Human Resource Development Division (RO-HRDD), HRDD Chief	Consolidation of IPCRF Data Consolidation Forms submitted by SDOs	1st week of September 2019	2nd week of September 2019
Central Office (CO)	Bureau of Human Resource and Organizational Development-Human Resource Development Division (BHROD-HRDD)	Consolidation of IPCRF Data Consolidation Forms submitted by Ros	2nd week of September 2019	4th week of September 2019
	National Educators Academy of the Philippines-Performance Management Unit and Professional Development Division (NEAP-PMU, NEAP-PDD)	Submission of RPMS Data Consolidation Forms to NEAP for HR development planning		

Accuracy and completeness of data must be ensured by the above-named responsible persons/offices at each governance level. In accordance with DepEd Order No. 2, s. 2015, the consolidated data will provide inputs to programs being developed on teachers' learning and development, and rewards and incentives.

The BHROD-HRDD shall conduct an orientation for all ROs between May and June 2019. The HRDD of all DepEd Ros must organize orientations for all SDOs within their jurisdiction and monitor the progress of data collection. To ensure that adequate support mechanisms are in place, school ICT Coordinators and Information Technology Officers (ITOs) at the SDOs/ROs must provide technical assistance and resources as necessary to School Heads and other offices responsible for data

collection. Particular attention should be given to schools with no or limited access to internet facilities.

The SDO-HRDS is expected to provide a status update on the progress of data collection and consolidation to the RO-HRDD by the 1st week of September 2019 (see Annex 4 for the report template). The ROs shall do the same to the BHROD-HRDD. The receiving offices shall provide feedback to ensure the accuracy and completeness of the submitted data or documents.

For wide dissemination and strict compliance.

ANNEX 1
GUIDE FOR IPCRF DATA COLLECTION, CONSOLIDATION, AND ANALYSIS

A. Data Gathering Forms

The following Excel-based data gathering forms (see Annex 2) shall be used:

Table 1. Types of Data Gathering Forms

Form Type	Purpose	Person Responsible
IPCRF Rating Collection Form	Record the individual IPCRF rating of teachers	School Head, Department Head
IPCRF Data Consolidation Form	Consolidate the IPCRF data	SDO HRMO, RO HRMO

Editable soft copies of these forms can be accessed through the following link:
<http://deped.in/IPCRFDataForms>.

B. Procedure

1. Encoding of IPCRF Data

Individual ratings of teachers based on the copy of duly approved IPCRF shall be encoded using the IPCRF Rating Collection Form. In small schools, the School Head shall encode the IPCRF data. In medium and large schools, the Department Heads shall encode teachers' IPCRF data within their jurisdiction using the IPCRF Rating Collection Form and submit the accomplished form to the School Head.

2. Consolidation of IPCRF Data at School Level

The School Head shall consolidate the IPCRF ratings using the IPCRF Data Consolidation Form and submit the accomplished form to the SDO by uploading the form to the link provided.

3. Submission and Consolidation of IPCRF Data at SDO, RO, and CO Levels

Designated personnel at the SDO-HRDS shall download the accomplished IPCRF Data Consolidation Forms uploaded by the School Heads in the link provided for the SDO. These submissions shall be further consolidated using the IPCRF Data Consolidation Form for onward submission to the RO-HRDD. Designated personnel at the RO-HRDD shall likewise do the same for submissions from SDOs for onward submission to BHROD-HRDD.

Links where accomplished forms will be submitted and downloaded will be provided via e-mail by the BHROD-HRDD. See Annex 3 for the detailed process flow. The BHROD-HRDD shall furnish NEAP with the consolidated national IPCRF data for Learning and Development Needs Assessment (LDNA) purposes.

All Regional Offices are requested to submit a directory of the official working/active e-mail address of each division to bhrod.hrdd@deped.gov.ph for this purpose. Only those e-mail addresses listed in the directory can be used to access the links.

ANNEX 2 IPCRF DATA GATHERING FORMS


IPCRF Rating Collection Form
Teacher I-III (Professional Teacher)

Name of Employee Position Employee ID # ENCODING STATUS: OPEN		Teacher I		Division School ID School Name Classification Rating Period	Laguna 337292 Necolas L. Garcia Memorial NHS Professional 2018-2019	
-------------------------------------------------------------------------------	--	-----------	--	-------------------------------------------------------------------------	---------------------------------------------------------------------------------	--

KRA	Weight per KRA	Objectives	Weight per Objective	Numerical Rating			Avg	Score
				Q	E	T		
KRA 1	22.5%	Objective 1	7.5%				SOVBP	SOVBP
		Objective 2	7.5%				SOVBP	SOVBP
		Objective 3	7.5%				SOVBP	SOVBP
KRA 2	22.5%	Objective 4	7.5%				SOVBP	SOVBP
		Objective 5	7.5%				SOVBP	SOVBP
		Objective 6	7.5%				SOVBP	SOVBP
KRA 3	22.5%	Objective 7	7.5%				SOVBP	SOVBP
		Objective 8	7.5%				SOVBP	SOVBP
		Objective 9	7.5%				SOVBP	SOVBP
KRA 4	22.5%	Objective 10	7.5%				SOVBP	SOVBP
		Objective 11	7.5%				SOVBP	SOVBP
		Objective 12	7.5%				SOVBP	SOVBP
Plus Factor	10%	Objective 13	10%				SOVBP	SOVBP
Final Rating: SOVBP							Adjusted Rating: SOVBP	

Save


Figure 1: IPCRF Rating Collection Form



Republic of the Philippines


Department of Education

DepED
DIVISION OFFICE - LAGUNA



IPCRF DATA CONSOLIDATION FORM
SY 2018-2019

This tool was created to automate the consolidation of IPCRF Rating Collection Form accomplished by schools. It contains the same report and summary sheets as the collection form and is designed for several levels of consolidation.



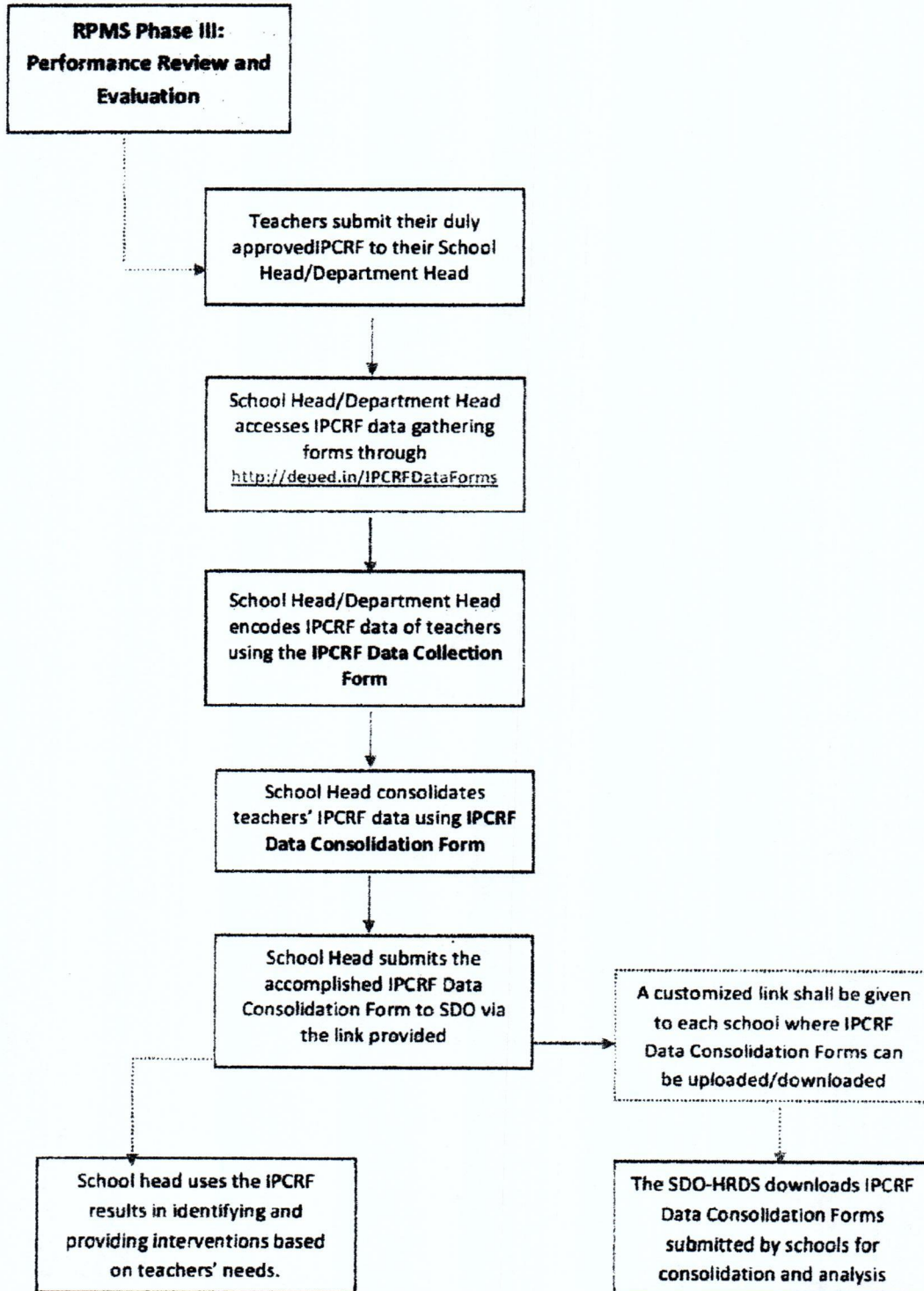
STATUS: **OPEN**

[Home](#) [Reports](#) [Formulas](#) [Database](#) [Tools](#) [Help](#) [Exit](#)

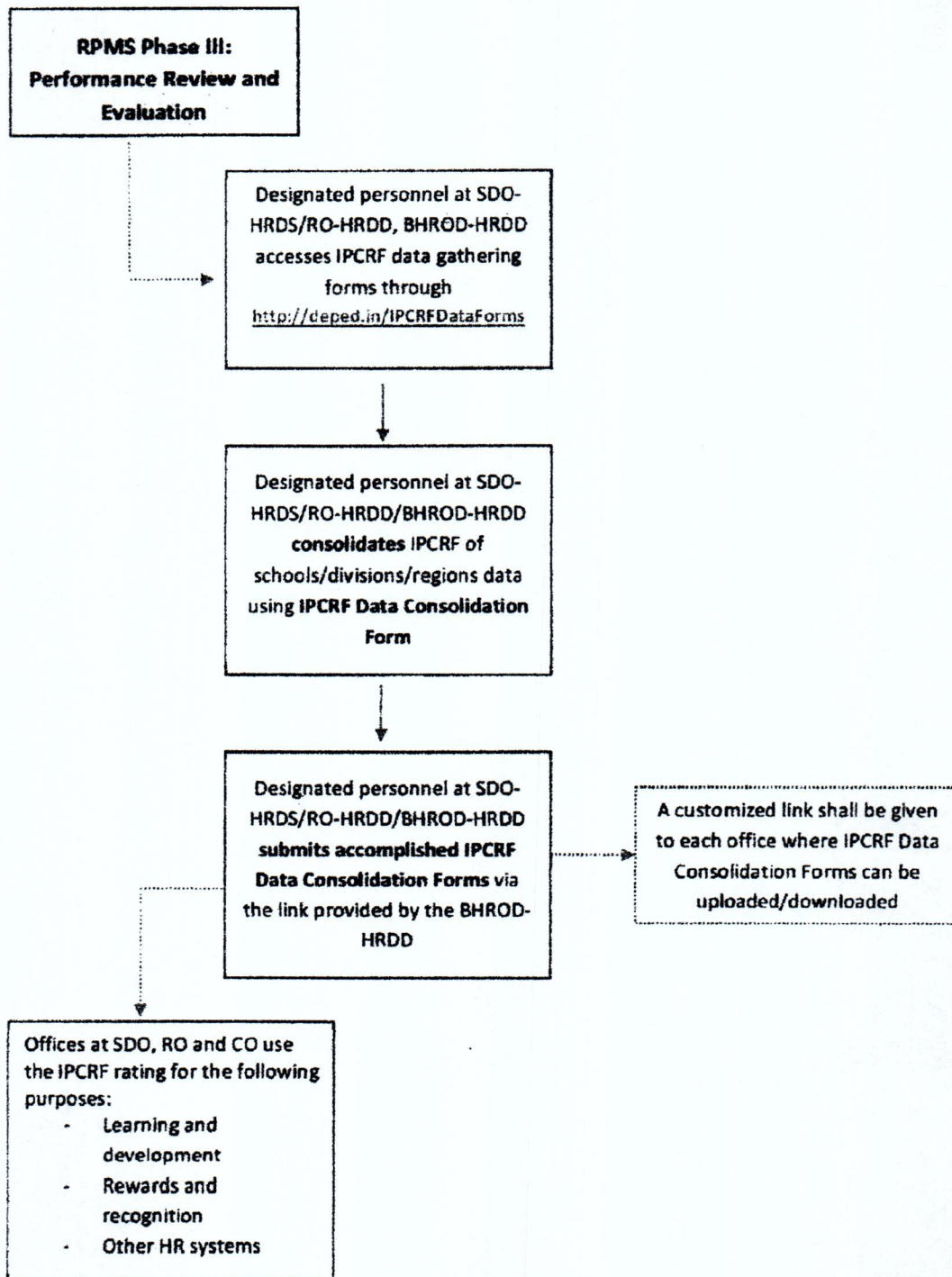
Figure 2: IPCRF Data Consolidation Form

ANNEX 3
PROCESS FLOW FOR RPMS DATA COLLECTION AND CONSOLIDATION

A. Collection, Consolidation and Submission (School to SDO)



B. Collection, Consolidation and Submission (SDO to RO, RO to CO)



**ANNEX 4
PROGRESS REPORT TEMPLATE**

Region/Division: _____

TIMELINE	PROGRESS <i>(Completion/submission rate of schools/SDOs)</i>	CHALLENGES ENCOUNTERED <i>(Issues and challenges encountered during collection and consolidation of IPCRF data)</i>	ACTIONS DONE <i>(Actions planned and undertaken to address the issues identified)</i>

Prepared by: _____
Signature over Printed Name

**Annex 5:
Links to Google Forms and Folders**

A. Submission from Regional Office to Central Office

1. Regional Offices shall submit the accomplished IPCRF Data Consolidation Form for further consolidation at the Central Office.
2. The Google Form shall be accessed through this link:
<http://deped.in/IPCRFDataCentral>

B. Submission and Consolidation from SDO to Regional Office

Region	Google Form Link <i>(To be accessed by SDO-HRDS to submit the accomplished division IPCRF Data Consolidation Forms)</i>	Google Folder Link <i>(To be accessed by designated RO-HRDDD personnel to download the IPCRF Data Consolidation Forms submitted by SDOs for further consolidation)</i>
Region I	http://deped.in/IPCRF81Data	http://deped.in/IPCRFDownloadR1
Region II	http://deped.in/IPCRF82Data	http://deped.in/IPCRFDownloadR2
Region III	http://deped.in/IPCRF83Data	http://deped.in/IPCRFDownloadR3
Region IV-A	http://deped.in/IPCRF84AData	http://deped.in/IPCRFDownload4A
Region IV-B	http://deped.in/IPCRF84BData	http://deped.in/IPCRFDownload4B
Region V	http://deped.in/IPCRF85Data	http://deped.in/IPCRFDownloadR5
Region VI	http://deped.in/IPCRF86Data	http://deped.in/IPCRFDownloadR6
Region VII	http://deped.in/IPCRF87Data	http://deped.in/IPCRFDownloadR7
Region VIII	http://deped.in/IPCRF88Data	http://deped.in/IPCRFDownloadR8
Region IX	http://deped.in/IPCRF89Data	http://deped.in/IPCRFDownloadR9
Region X	http://deped.in/IPCRF90Data	http://deped.in/IPCRFDownloadR10
Region XI	http://deped.in/IPCRF91Data	http://deped.in/IPCRFDownloadR11
Region XII	http://deped.in/IPCRF92Data	http://deped.in/IPCRFDownloadSOCCKS
Region XIII	http://deped.in/IPCRFCaragaData	http://deped.in/IPCRFDownloadCaraga
NCR	http://deped.in/IPCRFNCRData	http://deped.in/IPCRFDownloadNCR
CAR	http://deped.in/IPCRFCARData	http://deped.in/IPCRFDownloadCAR
BARMM	http://deped.in/IPCRFBARMMData	http://deped.in/IPCRFDownloadBARMM

C. Submission and Consolidation from Schools to School Division Office

Region	Division	Google Form Link <i>(To be accessed by School Heads to submit the accomplished school IPCRF Data Consolidation Forms)</i>	Google Folder Link <i>(To be accessed by designated SDO-HRDS personnel to download the IPCRF Data Consolidation Forms submitted by schools for further consolidation)</i>
BARMM	Basilan	http://deped.in/IPCREFBASILAN	http://deped.in/IPCREFDownloadBASILAN
	Lamitan City	http://deped.in/IPCREFLAMITAN	http://deped.in/IPCREFDownloadLAMITAN
	Lanao del Sur I	http://deped.in/IPCREFLANAODS1	http://deped.in/IPCREFDownloadLDS1
	Lanao del Sur II	http://deped.in/IPCREFLANAODS2	http://deped.in/IPCREFDownloadLDS2
	Maguindanao I	http://deped.in/IPCREFMAGUINDANAO1	http://deped.in/IPCREFDownloadMGD1
	Maguindanao II	http://deped.in/IPCREFMAGUINDANAO2	http://deped.in/IPCREFDownloadMGD2
	Marawi City	http://deped.in/IPCREFMARAWI	http://deped.in/IPCREFDownloadMRW
	Sulu	http://deped.in/IPCREFSUL	http://deped.in/IPCREFDownloadSUL
	Tawi-Tawi	http://deped.in/IPCREFTAWI	http://deped.in/IPCREFDownloadTAWI2
CAR	Abra	http://deped.in/IPCREFABRA	http://deped.in/IPCREFDownloadABRA
	Apayao	http://deped.in/IPCREFAPAYAO	http://deped.in/IPCREFDownloadAPY
	Baguio City	http://deped.in/IPCREFBAGUIO	http://deped.in/IPCREFDownloadBGU
	Benguet	http://deped.in/IPCREFBENGUET	http://deped.in/IPCREFDownloadBNG
	Ifugao	http://deped.in/IPCREFIFUGAO	http://deped.in/IPCREFDownloadIFE
	Kalinga	http://deped.in/IPCREFKALINGA	http://deped.in/IPCREFDownloadKLANG
	Mt. Province	http://deped.in/IPCREFMTPROVINCE	http://deped.in/IPCREFDownloadMTPRV
	Tabuk City	http://deped.in/IPCREFTABUK	http://deped.in/IPCREFDownloadTBK
NCR	Caloocan City	http://deped.in/IPCREFCALOOCAN	http://deped.in/IPCREFDownloadCLCN
	Las Pinas City	http://deped.in/IPCREFLAPINAS	http://deped.in/IPCREFDownloadLSPNS
	Makati City	http://deped.in/IPCREFMAKATI	http://deped.in/IPCREFDownloadMKI
	Malabon City	http://deped.in/IPCREFMALABON	http://deped.in/IPCREFDownloadMLBN
	Mandaluyong City	http://deped.in/IPCREFMANDALUYONG	http://deped.in/IPCREFDownloadMNDY
	Manila	http://deped.in/IPCREFMANILA	http://deped.in/IPCREFDownloadMNL
	Marikina City	http://deped.in/IPCREFMARIKINA	http://deped.in/IPCREFDownloadMRKN
	Muntinlupa City	http://deped.in/IPCREFMUNTINLUPA	http://deped.in/IPCREFDownloadMNTL
	Navotas City	http://deped.in/IPCREFNAVOTAS	http://deped.in/IPCREFDownloadNVTAS
	Paranaque City	http://deped.in/IPCREFPARANAQUE	http://deped.in/IPCREFDownloadPRNQ
	Pasay City	http://deped.in/IPCREFPASAY	http://deped.in/IPCREFDownloadPSY
	Pasig City	http://deped.in/IPCREFPASIG	http://deped.in/IPCREFDownloadPSG
	Quezon City	http://deped.in/IPCREFNCQUEZON	http://deped.in/IPCREFDownloadOZNC
	San Juan City	http://deped.in/IPCREFSANJUAN	http://deped.in/IPCREFDownloadSNJN
	Taguig City-Pateros	http://deped.in/IPCREFTAPAT	http://deped.in/IPCREFDownloadTAPAT
	Valenzuela City	http://deped.in/IPCREFVALENZUELA	http://deped.in/IPCREFDownloadVNZL
Region I	Alaminos City	http://deped.in/IPCREFALAMINOS	http://deped.in/IPCREFDownloadALMNS
	Batac City	http://deped.in/IPCREFBATAC	http://deped.in/IPCREFDownloadBATAC
	Candon City	http://deped.in/IPCREFCANDON	http://deped.in/IPCREFDownloadCNDN

Region	Division	Google Form Link <i>(To be accessed by School Heads to submit the accomplished school IPCRF Data Consolidation Forms)</i>	Google Folder Link <i>(To be accessed by designated SDO-HRDS personnel to download the IPCRF Data Consolidation Forms submitted by schools for further consolidation)</i>
	Dagupan City	http://deped.in/IPCREFDAGUPAN	http://deped.in/IPCREFDownloadDCUPN
	Ilocos Norte	http://deped.in/IPCREFILOCOSNORTE	http://deped.in/IPCREFDownloadILCSN
	Ilocos Sur	http://deped.in/IPCREFILOCOSSUR	http://deped.in/IPCREFDownloadILCSS
	La Union	http://deped.in/IPCREFLAUNION	http://deped.in/IPCREFDownloadLAL
	Laoag City	http://deped.in/IPCREFLAOAG	http://deped.in/IPCREFDownloadLLOAG
	Pangasinan I	http://deped.in/IPCREFPANGASINAN1	http://deped.in/IPCREFDownloadPNGSNI
	Pangasinan II	http://deped.in/IPCREFPANGASINAN2	http://deped.in/IPCREFDownloadPNGSN2
	San Carlos City	http://deped.in/IPCREFRISANCARLOS	http://deped.in/IPCREFDownloadRISCRLS
	San Fernando City	http://deped.in/IPCREFSANFERNANDO	http://deped.in/IPCREFDownloadRISNFRN
	Urdaneta City	http://deped.in/IPCREFURDANETA	http://deped.in/IPCREFDownloadURDNT
	Vigan City	http://deped.in/IPCREFVIGAN	http://deped.in/IPCREFDownloadVIGAN
Region II	Batanes	http://deped.in/IPCREFBATANES	http://deped.in/IPCREFDownloadBTNS
	Cagayan Valley	http://deped.in/IPCREFCAGAYANVALLEY	http://deped.in/IPCREFDownloadCCAYV
	Cauayan City	http://deped.in/IPCREFCAUAYAN	http://deped.in/IPCREFDownloadCYN
	Iligan City	http://deped.in/IPCREFILAGAN	http://deped.in/IPCREFDownloadILAGAN
	Isabela City	http://deped.in/IPCREFISABELA	http://deped.in/IPCREFDownloadR2ISBL
	Nueva Vizcaya	http://deped.in/IPCREFNVIZCAYA	http://deped.in/IPCREFDownloadNVZCY
	Quirino	http://deped.in/IPCREFQUIRINO	http://deped.in/IPCREFDownloadQRN
	Santiago City	http://deped.in/IPCREFSANTIAGO	http://deped.in/IPCREFDownloadSNTG
	Tuguegarao City	http://deped.in/IPCREFTUGUE	http://deped.in/IPCREFDownloadTUGUE
Region III	Angeles City	http://deped.in/IPCREFANGELES	http://deped.in/IPCREFDownloadANGLS
	Aurora	http://deped.in/IPCREFAURORA	http://deped.in/IPCREFDownloadAURORA
	Balanga City	http://deped.in/IPCREFBALANGA	http://deped.in/IPCREFDownloadBLNG
	Bataan	http://deped.in/IPCREFBATAAN	http://deped.in/IPCREFDownloadBTN
	Bulacan Province	http://deped.in/IPCREFBULACAN	http://deped.in/IPCREFDownloadBLCN
	Cabanatuan City	http://deped.in/IPCREFCABANATUAN	http://deped.in/IPCREFDownloadCBNTN
	Gapan City	http://deped.in/IPCREFGAPAN	http://deped.in/IPCREFDownloadGPN
	Mabalacat City	http://deped.in/IPCREFMABALACAT	http://deped.in/IPCREFDownloadMBLCT
	Malolos City	http://deped.in/IPCREFMALOLOS	http://deped.in/IPCREFDownloadMLOS
	Meycauayan	http://deped.in/IPCREFMEYCAUAYAN	http://deped.in/IPCREFDownloadMYCYN
	Nueva Ecija	http://deped.in/IPCREFNECJA	http://deped.in/IPCREFDownloadNECI
	Olongapo City	http://deped.in/IPCREFOLONGAPO	http://deped.in/IPCREFDownloadOLNGP
	Pampanga	http://deped.in/IPCREFPAMPANGA	http://deped.in/IPCREFDownloadPMPNG
	San Fernando City	http://deped.in/IPCREFSANFERNANDO	http://deped.in/IPCREFDownloadRSNFRN
	San Jose City	http://deped.in/IPCREFSANJOSE	http://deped.in/IPCREFDownloadSJOSF
	San Jose del Monte	http://deped.in/IPCREFSIDELMONTE	http://deped.in/IPCREFDownloadSIDM

Region	Division	Google Form Link (To be accessed by School Heads to submit the accomplished school IPCRF Data Consolidation Forms)	Google Folder Link (To be accessed by designated SDO-HRDS personnel to download the IPCRF Data Consolidation Forms submitted by schools for further consolidation)
	Science City of Munoz	http://deped.in/IPCREFSCMUNOZ	http://deped.in/IPCREFDownload/SCMNZ
	Tarlac City	http://deped.in/IPCREFTARLAC	http://deped.in/IPCREFDownload/TRLAC
	Tarlac Province	http://deped.in/IPCREFTARLACPROV	http://deped.in/IPCREFDownload/TRLACPROV
	Zambales	http://deped.in/IPCREFZAMBALES	http://deped.in/IPCREFDownload/ZAMBLES
Region IV-A	Antipolo City	http://deped.in/IPCREFANTIPOLO	http://deped.in/IPCREFDownload/ANTIPLO
	Bacoor City	http://deped.in/IPCREFBACOOOR	http://deped.in/IPCREFDownload/BCR
	Batangas City	http://deped.in/IPCREFBATANGASCITY	http://deped.in/IPCREFDownload/BTSC
	Batangas Province	http://deped.in/IPCREFBATANGASPROV	http://deped.in/IPCREFDownload/BTSP
	Binan City	http://deped.in/IPCREFBINAN	http://deped.in/IPCREFDownload/BNN
	Cabuyao City	http://deped.in/IPCREFCABUYAO	http://deped.in/IPCREFDownload/CBY
	Calamba City	http://deped.in/IPCREFCALAMBA	http://deped.in/IPCREFDownload/CLAMB
	Cavite City	http://deped.in/IPCREFCAVITECITY	http://deped.in/IPCREFDownload/CVTC
	Cavite Province	http://deped.in/IPCREFCAVITEPROV	http://deped.in/IPCREFDownload/CVTP
	Dasmariñas City	http://deped.in/IPCREFDASMARINAS	http://deped.in/IPCREFDownload/DSMRNS
	General Trias City	http://deped.in/IPCREFGENTRIAS	http://deped.in/IPCREFDownload/GNTRS
	Imus City	http://deped.in/IPCREFIMUS	http://deped.in/IPCREFDownload/IMUS
	Laguna	http://deped.in/IPCREFLAGUNA	http://deped.in/IPCREFDownload/LAGN
	Lipa City	http://deped.in/IPCREFLIPA	http://deped.in/IPCREFDownload/LIPA
	Lucena City	http://deped.in/IPCREFLUCENA	http://deped.in/IPCREFDownload/LCEN
	Quezon Province	http://deped.in/IPCREFQUEZONPROV	http://deped.in/IPCREFDownload/QZNP
	Rizal	http://deped.in/IPCREFRIZALPROV	http://deped.in/IPCREFDownload/RZL
	San Pablo City	http://deped.in/IPCREFSANPABLO	http://deped.in/IPCREFDownload/SNPBL
	Sta. Rosa City	http://deped.in/IPCREFSTAROSA	http://deped.in/IPCREFDownload/STRS
	Taanuan City	http://deped.in/IPCREFTANAUAN	http://deped.in/IPCREFDownload/TANN
Tayabas City	http://deped.in/IPCREFTAYABAS	http://deped.in/IPCREFDownload/TYBS	
Region IV-B	Calapan City	http://deped.in/IPCREFCALAPAN	http://deped.in/IPCREFDownload/CLPN
	Marinduque	http://deped.in/IPCREFMARINDUQUE	http://deped.in/IPCREFDownload/MRNDQ
	Occidental Mindoro	http://deped.in/IPCREFOCMINDORO	http://deped.in/IPCREFDownload/OCMINDR
	Oriental Mindoro	http://deped.in/IPCREFORIEMINDORO	http://deped.in/IPCREFDownload/ORIMNDR
	Palawan	http://deped.in/IPCREFPALAWAN	http://deped.in/IPCREFDownload/PALAWN
	Puerto Princesa	http://deped.in/IPCREFPPRINCESA	http://deped.in/IPCREFDownload/PRNCS
	Romblon	http://deped.in/IPCREFROMBLON	http://deped.in/IPCREFDownload/RMBLN
Region V	Albay	http://deped.in/IPCREFALBAY	http://deped.in/IPCREFDownload/ALBAY
	Camarines Norte	http://deped.in/IPCREFCAMNORTE	http://deped.in/IPCREFDownload/CMNRT
	Camarines Sur	http://deped.in/IPCREFCAMSUR	http://deped.in/IPCREFDownload/CMNSK
	Catanduanes	http://deped.in/IPCREFCATANDUANES	http://deped.in/IPCREFDownload/CTNDNS

Region	Division	Google Form Link (To be accessed by School Heads to submit the accomplished school IPCRF Data Consolidation Forms)	Google Folder Link (To be accessed by designated SDO-HRDS personnel to download the IPCRF Data Consolidation Forms submitted by schools for further consolidation)
	Iriga City	http://deped.in/IPCRRIRIGA	http://deped.in/IPCRRDownloadIRIG
	Legazpi City	http://deped.in/IPCRRLEGAZPI	http://deped.in/IPCRRDownloadLEGZ
	Ligao City	http://deped.in/IPCRRLIGAO	http://deped.in/IPCRRDownloadLGAO
	Masbate Province	http://deped.in/IPCRRMASBATEPROV	http://deped.in/IPCRRDownloadMSBP
	Masbate City	http://deped.in/IPCRRMASBATECITY	http://deped.in/IPCRRDownloadMSBC
	Naga City	http://deped.in/IPCRR5NAGA	http://deped.in/IPCRRDownloadR5NAGA
	Sorsogon City	http://deped.in/IPCRR5ORSOGON	http://deped.in/IPCRRDownloadSRSGNC
	Sorsogon Province	http://deped.in/IPCRR5ORSOGONPROV	http://deped.in/IPCRRDownloadSRSGNF
	Tabaco City	http://deped.in/IPCRRTABACO	http://deped.in/IPCRRDownloadTBC
Region VI	Aklan	http://deped.in/IPCRRAKLAN	http://deped.in/IPCRRDownloadAKLAN
	Antique	http://deped.in/IPCRRANTIQUA	http://deped.in/IPCRRDownloadANTQ
	Bacolod City	http://deped.in/IPCRRBACOLOD	http://deped.in/IPCRRDownloadBCLOD
	Bago City	http://deped.in/IPCRRBAGO	http://deped.in/IPCRRDownloadBAGO
	Cadiz City	http://deped.in/IPCRRCADIZ	http://deped.in/IPCRRDownloadCADZ
	Capiz City	http://deped.in/IPCRRCAPIZ	http://deped.in/IPCRRDownloadCPZ
	Escalante City	http://deped.in/IPCRRFESCALANTE	http://deped.in/IPCRRDownloadESCLNT
	Guimaras	http://deped.in/IPCRRFGUIMARAS	http://deped.in/IPCRRDownloadCMRS
	Himamaylan City	http://deped.in/IPCRRFHIMAMAYLAN	http://deped.in/IPCRRDownloadHMMAYLN
	Iloilo City	http://deped.in/IPCRRFILOILOICITY	http://deped.in/IPCRRDownloadILOO
	Iloilo Province	http://deped.in/IPCRRFILOILOPROV	http://deped.in/IPCRRDownloadILOP
	Kabankalan City	http://deped.in/IPCRRFKABANKALAN	http://deped.in/IPCRRDownloadKBNKLN
	La Carlota City	http://deped.in/IPCRRFLACARLOTA	http://deped.in/IPCRRDownloadLCRLT
	Negros Occidental	http://deped.in/IPCRRFNEGROSOC	http://deped.in/IPCRRDownloadNGRSOC
	Passi City	http://deped.in/IPCRRFPASSI	http://deped.in/IPCRRDownloadPASSI
	Roxas City	http://deped.in/IPCRRFROXAS	http://deped.in/IPCRRDownloadRXS
	Sagay City	http://deped.in/IPCRRFSAGAY	http://deped.in/IPCRRDownloadSGY
	San Carlos City	http://deped.in/IPCRRF6SCARLOS	http://deped.in/IPCRRDownloadR6SCL
	Silay City	http://deped.in/IPCRRFSILAY	http://deped.in/IPCRRDownloadSILAY
	Sipalay City	http://deped.in/IPCRRFSIPALAY	http://deped.in/IPCRRDownloadSPLY
Region VII	Bais City	http://deped.in/IPCRRFBAIS	http://deped.in/IPCRRDownloadBAIS
	Bayawan City	http://deped.in/IPCRRFBAYAWAN	http://deped.in/IPCRRDownloadBYWN
	Bogo City	http://deped.in/IPCRRFBOGO	http://deped.in/IPCRRDownloadBOGO
	Bohol	http://deped.in/IPCRRFBOHOL	http://deped.in/IPCRRDownloadBHLL
	Carcar City	http://deped.in/IPCRRFCARCAR	http://deped.in/IPCRRDownloadCRCR
	Cebu City	http://deped.in/IPCRRFCEBUCITY	http://deped.in/IPCRRDownloadCEBUC
	Cebu Province	http://deped.in/IPCRRFCEBUPROV	http://deped.in/IPCRRDownloadCEBUP
	Danao	http://deped.in/IPCRRFDANA0	http://deped.in/IPCRRDownloadDNO
Dumaguete City	http://deped.in/IPCRRFDUMAGUETE	http://deped.in/IPCRRDownloadDMGT	

Region	Division	Google Form Link <i>(To be accessed by School Heads to submit the accomplished school IPCRF Data Consolidation Forms)</i>	Google Folder Link <i>(To be accessed by designated SDO-HRDS personnel to download the IPCRF Data Consolidation Forms submitted by schools for further consolidation)</i>
	Guinhulngan City	http://deped.in/IPCRCFGUINHULNGAN	http://deped.in/IPCRCFDownloadGNIHLN
	Lapu-Lapu City	http://deped.in/IPCRCFLAPULAPU	http://deped.in/IPCRCFDownloadLAPU
	Mandaue City	http://deped.in/IPCRCFMANDAUE	http://deped.in/IPCRCFDownloadMDNU
	Naga City	http://deped.in/IPCRCFR7NAGA	http://deped.in/IPCRCFDownloadR7NAGA
	Negros Oriental	http://deped.in/IPCRCFNEGROSORIENTAL	http://deped.in/IPCRCFDownloadNGRSOR
	Siquijor	http://deped.in/IPCRCFSIQUIJOR	http://deped.in/IPCRCFDownloadSQJR
	Tagbilaran City	http://deped.in/IPCRCFTAGBILARAN	http://deped.in/IPCRCFDownloadTGBLRN
	Talisay City	http://deped.in/IPCRCFTALISAY	http://deped.in/IPCRCFDownloadTUSY
	Tanjay City	http://deped.in/IPCRCFTANJAY	http://deped.in/IPCRCFDownloadTNFY
	Toledo City	http://deped.in/IPCRCFTOLEDO	http://deped.in/IPCRCFDownloadTLDO
Region VIII	Baybay City	http://deped.in/IPCRCFBAYBAY	http://deped.in/IPCRCFDownloadBAY
	Biliran	http://deped.in/IPCRCFBILIRAN	http://deped.in/IPCRCFDownloadBLRN
	Borongan City	http://deped.in/IPCRCFBORONGAN	http://deped.in/IPCRCFDownloadBRGN
	Calbayog City	http://deped.in/IPCRCFCALBAYOG	http://deped.in/IPCRCFDownloadCLBYG
	Catbalogan City	http://deped.in/IPCRCFCATBALOGAN	http://deped.in/IPCRCFDownloadCTBLGN
	East Samar	http://deped.in/IPCRCFEASTSAMAR	http://deped.in/IPCRCFDownloadESMP
	Leyte	http://deped.in/IPCRCFLEYTE	http://deped.in/IPCRCFDownloadLYT
	Maasin City	http://deped.in/IPCRCFMAASIN	http://deped.in/IPCRCFDownloadMSN
	Northern Samar	http://deped.in/IPCRCFNORTHSAMAR	http://deped.in/IPCRCFDownloadNSMR
	Ormoc City	http://deped.in/IPCRCFORMOC	http://deped.in/IPCRCFDownloadORMC
	Southern Leyte	http://deped.in/IPCRCFSOUTHLEYTE	http://deped.in/IPCRCFDownloadSLYT
	Tacloban City	http://deped.in/IPCRCFTACLOBAN	http://deped.in/IPCRCFDownloadTCLBN
	Western Samar	http://deped.in/IPCRCFWESTSAMAR	http://deped.in/IPCRCFDownloadWSMR
Region IX	Dapitan City	http://deped.in/IPCRCFDAPITAN	http://deped.in/IPCRCFDownloadDPTN
	Dipology City	http://deped.in/IPCRCFDIPOLOG	http://deped.in/IPCRCFDownloadDPLG
	Isabela City	http://deped.in/IPCRCFR9ISABELA	http://deped.in/IPCRCFDownloadR9ISBL
	Pagadian City	http://deped.in/IPCRCFPAGADIAN	http://deped.in/IPCRCFDownloadPGDN
	Zamboanga City	http://deped.in/IPCRCFZAMBACITY	http://deped.in/IPCRCFDownloadZMBC
	Zamboanga del Norte	http://deped.in/IPCRCFZAMBODELNORTE	http://deped.in/IPCRCFDownloadZMNDN
	Zamboanga del Sur	http://deped.in/IPCRCFZAMBODELSUR	http://deped.in/IPCRCFDownloadZMBDS
	Zamboanga Sibugay	http://deped.in/IPCRCFZAMBOSIBUGAY	http://deped.in/IPCRCFDownloadZMBSB
Region X	Bukidnon	http://deped.in/IPCRCFBUKIDNON	http://deped.in/IPCRCFDownloadBKCN
	Cagayan de Oro City	http://deped.in/IPCRCFCDO	http://deped.in/IPCRCFDownloadCDO
	Camiguin	http://deped.in/IPCRCFCAMIGUIN	http://deped.in/IPCRCFDownloadCMGN
	El Salvador City	http://deped.in/IPCRCFELSALVADOR	http://deped.in/IPCRCFDownloadSLVDR
	Gingoog City	http://deped.in/IPCRCFGINGOOG	http://deped.in/IPCRCFDownloadGNGG

Region	Division	Google Form Link (To be accessed by School Heads to submit the accomplished school IPCRF Data Consolidation Forms)	Google Folder Link (To be accessed by designated SDO-HRDS personnel to download the IPCRF Data Consolidation Forms submitted by schools for further consolidation)
	Iligan City	http://deped.in/IPCREFILIGAN	http://deped.in/IPCREFDownload/ILIGN
	Lanao del Norte	http://deped.in/IPCREFLANAODELNORTE	http://deped.in/IPCREFDownload/LNDN
	Malaybay City	http://deped.in/IPCREFMALAYBALAY	http://deped.in/IPCREFDownload/MLYBLV
	Misamis Occidental	http://deped.in/IPCREFMISAMISOCC	http://deped.in/IPCREFDownload/MSMOCC
	Misamis Oriental	http://deped.in/IPCREFMISAMISOR	http://deped.in/IPCREFDownload/MSMOR
	Oroquieta City	http://deped.in/IPCREFOROQUIETA	http://deped.in/IPCREFDownload/ORQT
	Ozamis City	http://deped.in/IPCREFOZAMIS	http://deped.in/IPCREFDownload/OZMS
	Tangub City	http://deped.in/IPCREFTANGUB	http://deped.in/IPCREFDownload/TNGB
	Valencia City	http://deped.in/IPCREFVALENCIA	http://deped.in/IPCREFDownload/VLNC
Region XI	Compostela Valley	http://deped.in/IPCREFCOMPVALLEY	http://deped.in/IPCREFDownload/CMPL
	Davao City	http://deped.in/IPCREFDAVAOCITY	http://deped.in/IPCREFDownload/DVOC
	Davao del Norte	http://deped.in/IPCREFDAVAODELNORTE	http://deped.in/IPCREFDownload/DVODN
	Davao del Sur	http://deped.in/IPCREFDAVAODELSUR	http://deped.in/IPCREFDownload/DVODS
	Davao Occidental	http://deped.in/IPCREFDAVAOCC	http://deped.in/IPCREFDownload/DVOCOC
	Davao Oriental	http://deped.in/IPCREFDAVAOOR	http://deped.in/IPCREFDownload/DVOCOR
	Digos City	http://deped.in/IPCREFDIGOS	http://deped.in/IPCREFDownload/DGCS
	Mati City	http://deped.in/IPCREFMATI	http://deped.in/IPCREFDownload/MATI
	Panabo City	http://deped.in/IPCREFPANABO	http://deped.in/IPCREFDownload/PNE
	Samar City	http://deped.in/IPCREFSAMAL	http://deped.in/IPCREFDownload/SMH
	Tagum City	http://deped.in/IPCREFTAGUM	http://deped.in/IPCREFDownload/TGCM
	Region XII	Cotabato City	http://deped.in/IPCREFCOTABATOCITY
Cotabato Province		http://deped.in/IPCREFCOTABATOPROV	http://deped.in/IPCREFDownload/CTBTP
General Santos City		http://deped.in/IPCREFGENSAN	http://deped.in/IPCREFDownload/GNSN
Kidapawan City		http://deped.in/IPCREFKIDAPAWAN	http://deped.in/IPCREFDownload/KDTPW
Koronadal City		http://deped.in/IPCREFKORONADAL	http://deped.in/IPCREFDownload/KRNDL
Saranggani		http://deped.in/IPCREFSARANGGANI	http://deped.in/IPCREFDownload/SRNGN
South Cotabato		http://deped.in/IPCREFSCOTABATO	http://deped.in/IPCREFDownload/SCBTB
Sultan Kudarat		http://deped.in/IPCREFSKUDARAT	http://deped.in/IPCREFDownload/SKDRT
Tacurong City		http://deped.in/IPCREFTACURONG	http://deped.in/IPCREFDownload/TCRNG
Caraga	Agusan del Norte	http://deped.in/IPCREFAGUSANDELNORTE	http://deped.in/IPCREFDownload/AGDN
	Agusan del Sur	http://deped.in/IPCREFAGUSANDELSUR	http://deped.in/IPCREFDownload/AGDS
	Bayugan City	http://deped.in/IPCREFBAYUGAN	http://deped.in/IPCREFDownload/BYCN
	Bislig City	http://deped.in/IPCREFBISLIG	http://deped.in/IPCREFDownload/BSLG
	Butuan	http://deped.in/IPCREFBUTUAN	http://deped.in/IPCREFDownload/BUTN
	Cabadbaran City	http://deped.in/IPCREFCABADBARAN	http://deped.in/IPCREFDownload/CBDBRN
	Dinagat Islands	http://deped.in/IPCREFDINAGAT	http://deped.in/IPCREFDownload/DNCT
	Siargao	http://deped.in/IPCREFSIARGAO	http://deped.in/IPCREFDownload/SRCC

Region	Division	Google Form Link <i>(To be accessed by School Heads to submit the accomplished school IPCRF Data Consolidation Forms)</i>	Google Folder Link <i>(To be accessed by designated SDO-HRDS personnel to download the IPCRF Data Consolidation Forms submitted by schools for further consolidation)</i>
	Surigao City	http://deped.in/IPCRESURIGAOCITY	http://deped.in/IPCREFDownloadSRCZ
	Surigao del Norte	http://deped.in/IPCRESURIGAODELNORTE	http://deped.in/IPCREFDownloadSRCDN
	Surigao del Sur	http://deped.in/IPCRESURIGAODELSUR	http://deped.in/IPCREFDownloadSRCDS
	Tandag City	http://deped.in/IPCREFTANDAG	http://deped.in/IPCREFDownloadTNDG