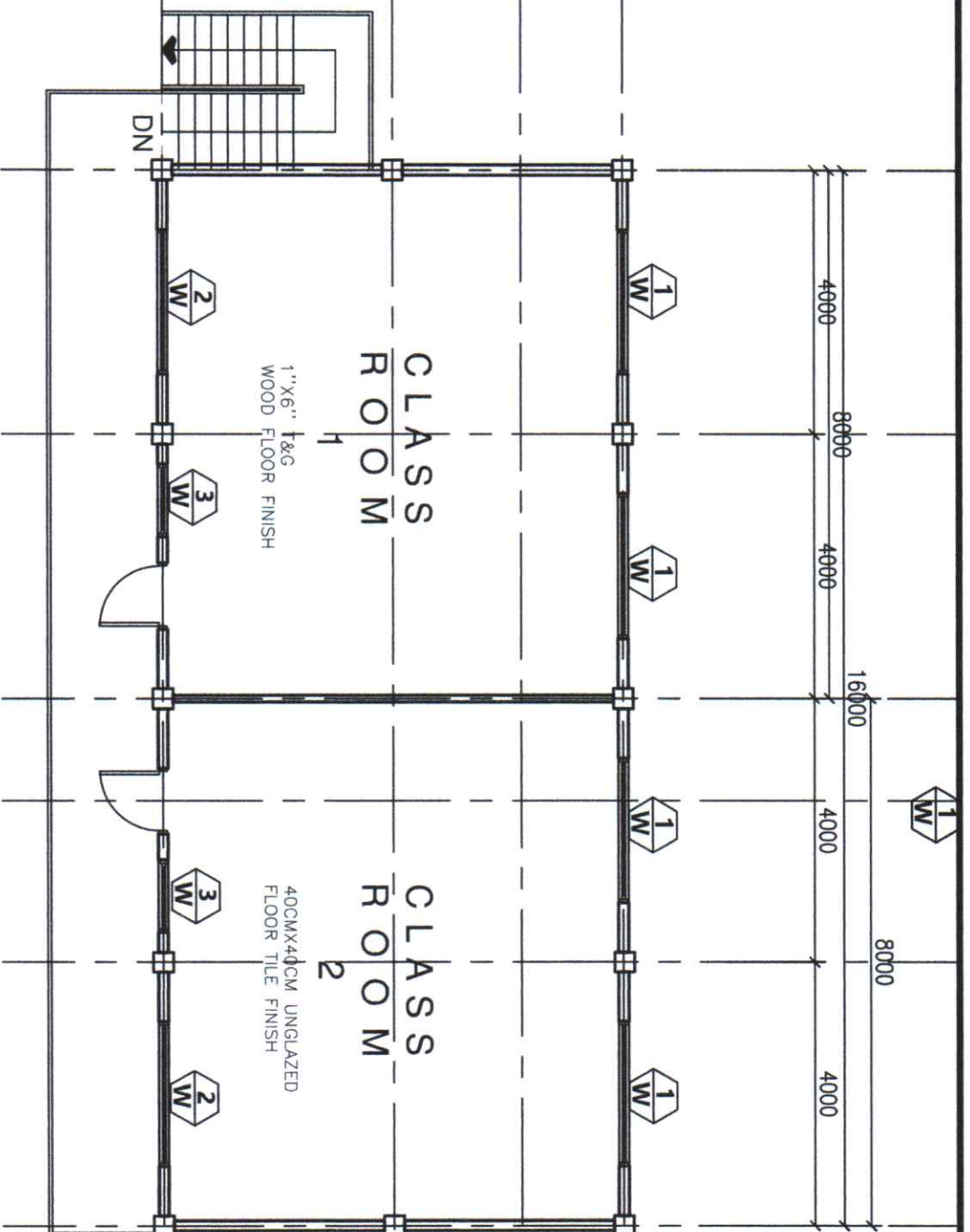


FIRST FLOOR PLAN

SCALE : 1:100M

IMPLEMENTING AGENCY	PROJECT TITLE & LOCATION	PREPARED BY:	CHECKED & REVIEWED BY:	RECOMMENDING APPROVAL:	APPROVED BY:	SHEET CONTENTS	SHEET NO.
 DEPED BAGUIO CITY DIVISION OFFICE	REPAIR AND REHABILITATION OF SCHOOL BUILDINGS STO. TOMAS NHS, STO. TOMAS BAGUIO CITY	ROSELYN B. DIMOG ENGINEER II	JENNIFER D. ROLDO ENGINEER III	ARTHUR TIONGAN SCHOOL CHIEF	MARIE CAROLYN B. VERANO, CESO V SCHOOLS DIVISION SUPERINTENDENT 10-28-20	AS SHOWN	1 OF 8



SECOND FLOOR PLAN SCALE: 1:100M

IMPLEMENTING AGENCY

PROJECT TITLE & LOCATION

PREPARED BY:

CHECKED & REVIEWED BY:

RECOMMENDING APPROVAL:

APPROVED BY:

SHEET CONTENTS

SHEET NO.



DEPED BAGUIO CITY
DIVISION OFFICE

REPAIR AND REHABILITATION
OF SCHOOL BUILDINGS
STO. TOMAS NHS, STO. TOMAS
BAGUIO CITY

ROSELYN B. DIMOG
ENGINEER II

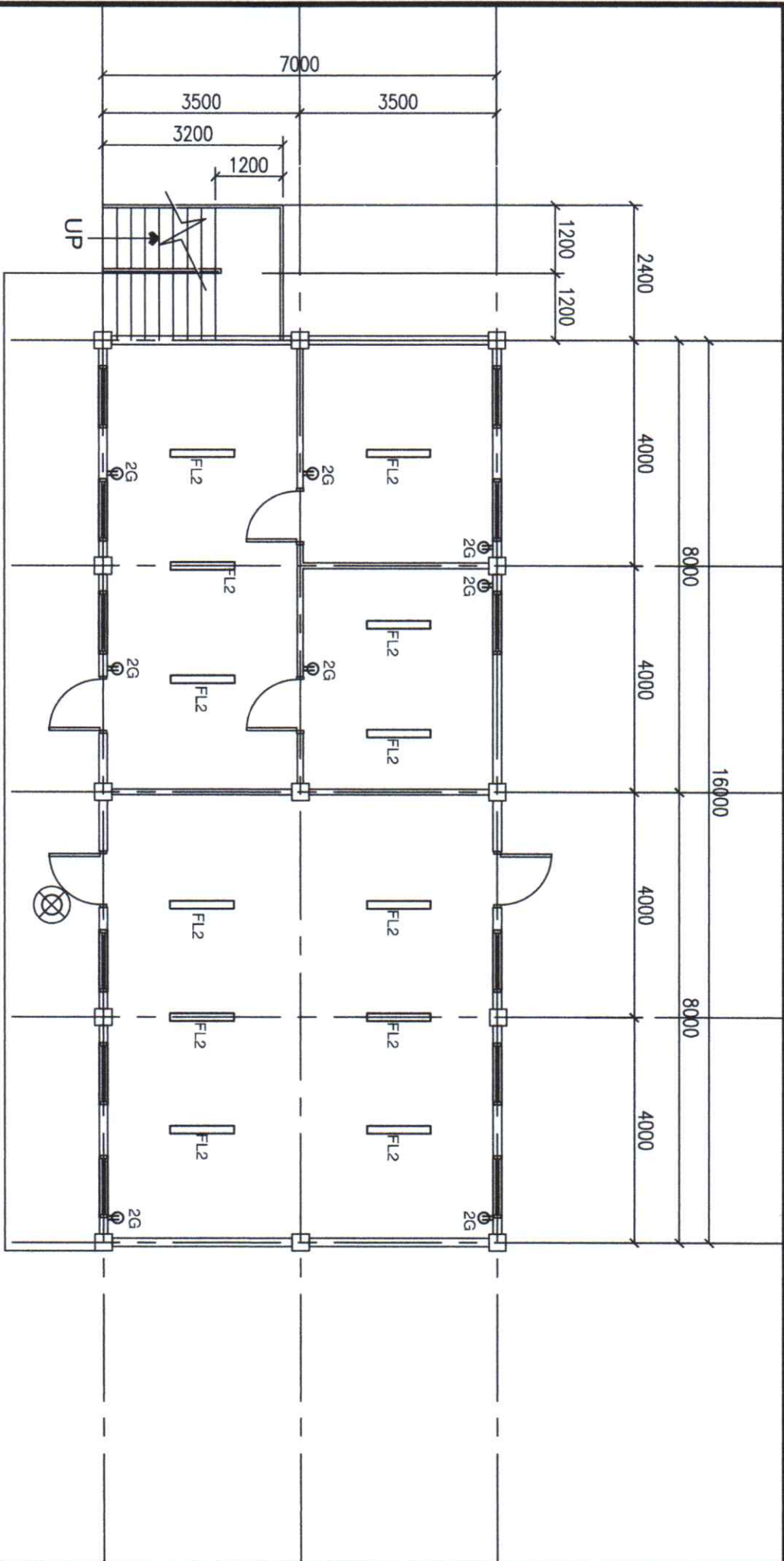
JENNIFER D. POLIDO
ENGINEER III

APRIL R. TONGAN
SCHOOL CHIEF

MARIE CAROLYN B. VERANO, CESO V
SCHOOLS DIVISION SUPERINTENDENT
10-28-20

AS SHOWN


2 OF 8



LIGHT AND POWER LAYOUT

SCALE :

1:100M

 <p>DEPED BAGUIO CITY DIVISION OFFICE</p>	<p>IMPLEMENTING AGENCY</p>	<p>PROJECT TITLE & LOCATION</p> <p>REPAIR AND REHABILITATION OF SCHOOL BUILDINGS STO. TOMAS NHS, STO. TOMAS BAGUIO CITY</p>	<p>PREPARED BY:</p> <p>ROSELYN B. DIMOG ENGINEER II</p>	<p>CHECKED & REVIEWED BY:</p> <p>JENNIFER B. POLIDO ENGINEER III</p>	<p>RECOMMENDING APPROVAL:</p> <p>ARTHUR M. MORGAN SCHOOL CHIEF</p>	<p>APPROVED BY:</p> <p>MARIE CAROLYN B. VERANO, CESO V SCHOOLS DIVISION SUPERINTENDENT</p>	<p>SHEET CONTENTS</p> <p>AS SHOWN</p>	<p>SHEET NO.</p> <p>3 OF 8</p>
---	----------------------------	---	---	--	--	--	---------------------------------------	--------------------------------



DEPED BAGUIO CITY
DIVISION OFFICE

REPAIR AND REHABILITATION
OF SCHOOL BUILDINGS
STO. TOMAS NHS, STO. TOMAS
BAGUIO CITY

PREPARED BY:

ROSELYN B. DIMOG
ENGINEER II

CHECKED & REVIEWED BY:

JENNIFER B. POLIDO
ENGINEER III

RECOMMENDING APPROVAL:

ARTHUR M. MORGAN
SCHOOL CHIEF

APPROVED BY:

MARIE CAROLYN B. VERANO, CESO V
SCHOOLS DIVISION SUPERINTENDENT






SHEET CONTENTS

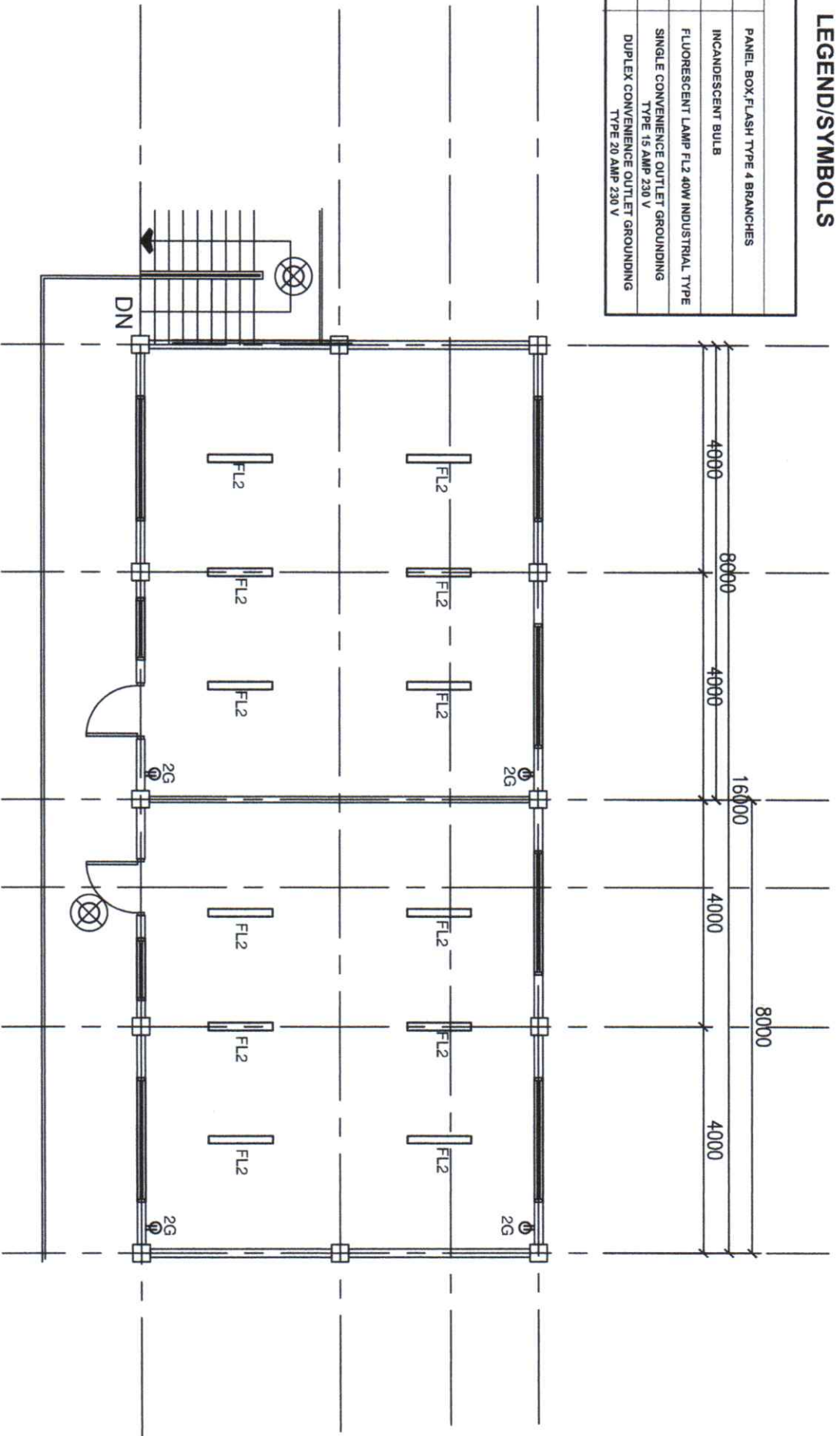
AS SHOWN

SHEET NO.

3 OF 8

LEGEND/SYMBOLS

	PANEL BOX, FLASH TYPE 4 BRANCHES
	INCANDESCENT BULB
	FLUORESCENT LAMP FL2 40W INDUSTRIAL TYPE
	SINGLE CONVENIENCE OUTLET GROUNDING TYPE 15 AMP 230 V
	DUPLEX CONVENIENCE OUTLET GROUNDING TYPE 20 AMP 230 V



SECOND FLOOR PLAN

1:100M



DEPTED BAGUIO CITY
DIVISION OFFICE

REPAIR AND REHABILITATION
OF SCHOOL BUILDINGS
STO. TOMAS NHS, STO. TOMAS
BAGUIO CITY

IMPLEMENTING AGENCY

PROJECT TITLE & LOCATION

PREPARED BY:

CHECKED & REVIEWED BY:

RECOMMENDING APPROVAL:

APPROVED BY:

SHEET CONTENTS

SHEET NO.

ROSELYN B. DIMOG
ENGINEER II

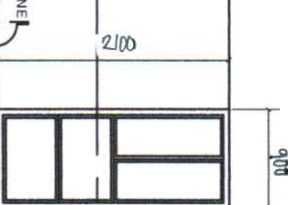
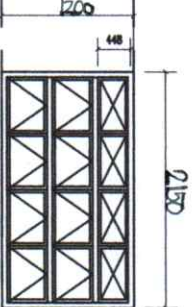
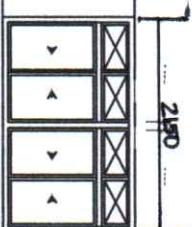
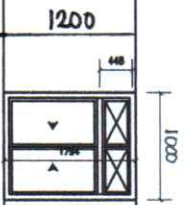




JENNIFER D. POLIDO
ENGINEER III

ARTHUR WONGAN
SCHOOL CHIEF

MARIE CAROLYN B. VERANO, CESO V
SCHOOLS DIVISION SUPERINTENDENT
P-28-20

AS SHOWN


4 OF 8

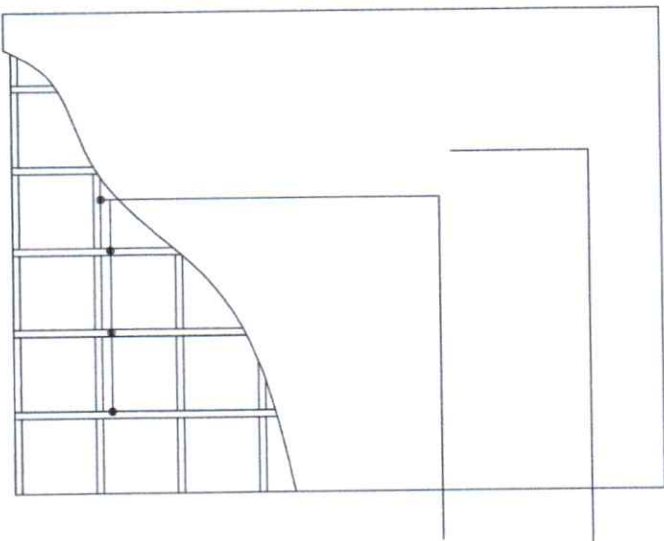
DRAWING								
	FLOOR FINISH LINE							
LEGEND								
DESCRIPTION	STEEL DOOR		STEEL CASEMENT AWNING WINDOW		ALUMINUM WINDOW (100MMX 500 TUBULAR ALUMINUM FRAME)		ALUMINUM SLIDING WINDOW (100MMX 500 TUBULAR ALUMINUM FRAME)	
LOCATION	ENTRANCE		AS SHOWN		AS SHOWN		AS SHOWN	
QUANTITY	2		10		46		4	

DOORS AND WINDOW SCHEDULE

SCALE :

NTS

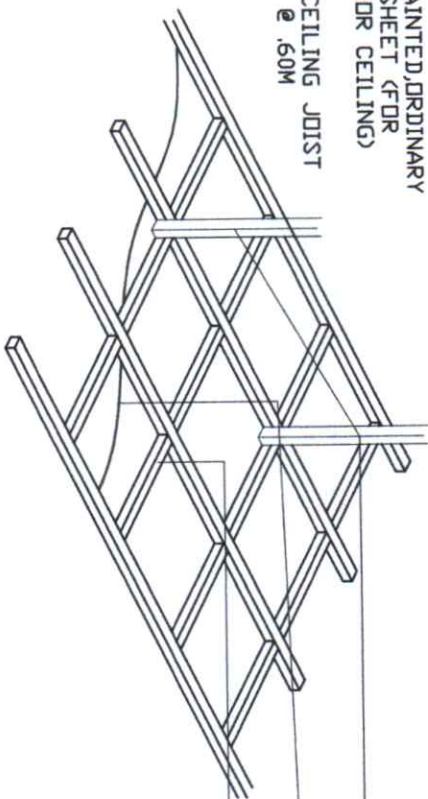
IMPLEMENTING AGENCY	PROJECT TITLE & LOCATION	PREPARED BY:	CHECKED & REVIEWED BY:	RECOMMENDING APPROVAL:	APPROVED BY:	SHEET CONTENTS	SHEET NO.
 DEPED BAGUIO CITY DIVISION OFFICE	REPAIR AND REHABILITATION OF SCHOOL BUILDINGS STO. TOMAS NHS, STO. TOMAS BAGUIO CITY	ROSELYN B. DIMOG ENGINEER	JENNIFER B. POLIDO ENGINEER III	ARTHUR TIONGAN SCOD CHIEF	MARIE CAROLYN B. VERANO, CESO V SCHOOLS DIVISION SUPERINTENDENT PC-28-20	AS SHOWN	5 OF 8



1/4" PLYWOOD PAINT
FINISH (FOR INTERIOR
CEILING)

400MM
PRE-PAINTED, ORDINARY
FLAT SHEET (FOR
EXTERIOR CEILING)

2"x2" CEILING JOIST
SPACED @ .60M



2"x2" CEILING
HANGER

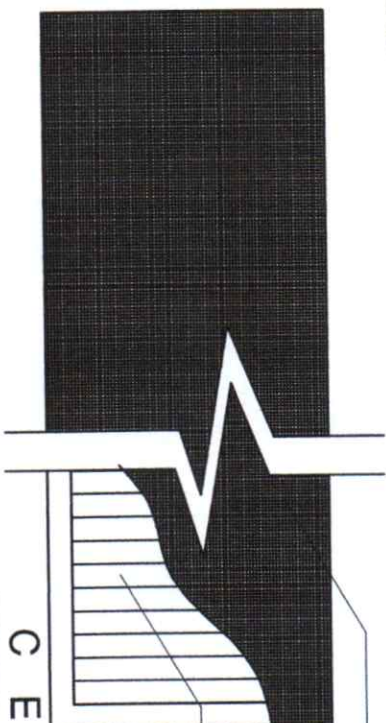
1/4" PLYWOOD PAINT
FINISH

2"x2" CEILING JOIST
SPACED @ .60M

REFLECTED CEILING PLAN

SCALE :

NTS



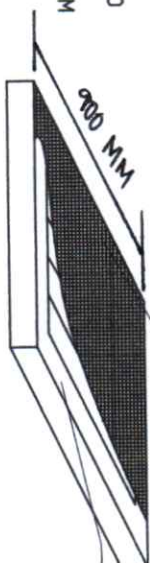
STAINLESS STEEL
WIRE MESH

25MMX25MMX300
WOOD SLATS
SPACED @ 25MM

CEILING DETAIL

SCALE :

NTS



STAINLESS STEEL
WIRE MESH

25MMX25MMX300
WOOD SLATS
SPACED @ 25MM

CEILING VENT

SCALE :

NTS

IMPLEMENTING AGENCY

PROJECT TITLE & LOCATION

PREPARED BY:

CHECKED & REVIEWED BY:

RECOMMENDING APPROVAL:

APPROVED BY:

SHEET CONTENTS

SHEET NO.



DEPED BAGUIO CITY
DIVISION OFFICE

REPAIR AND REHABILITATION
OF SCHOOL BUILDINGS
STO. TOMAS NHS, STO. TOMAS
BAGUIO CITY

ROSELYN B. DIMOG
ENGINEER

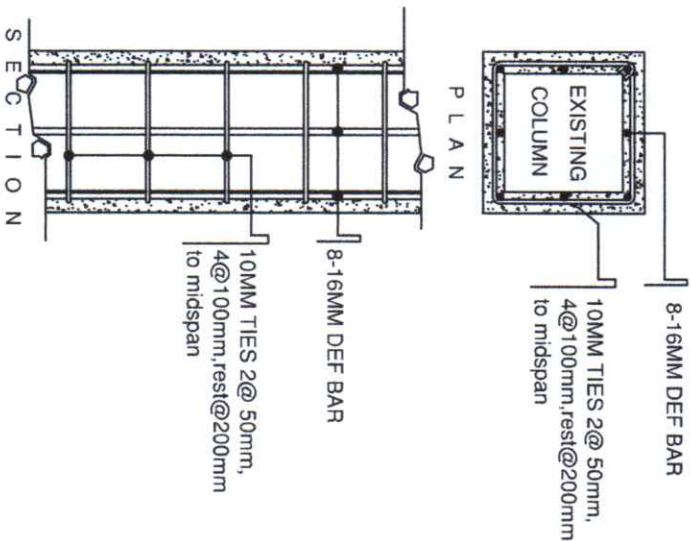
JENNIFER D. POLIDO
ENGINEER III

ARTHUR TIONGAN
SCOD CHIEF

MARIE CAROLYN B. VERANO, CESO V
SCHOOLS DIVISION SUPERINTENDENT
10-28-20

AS SHOWN

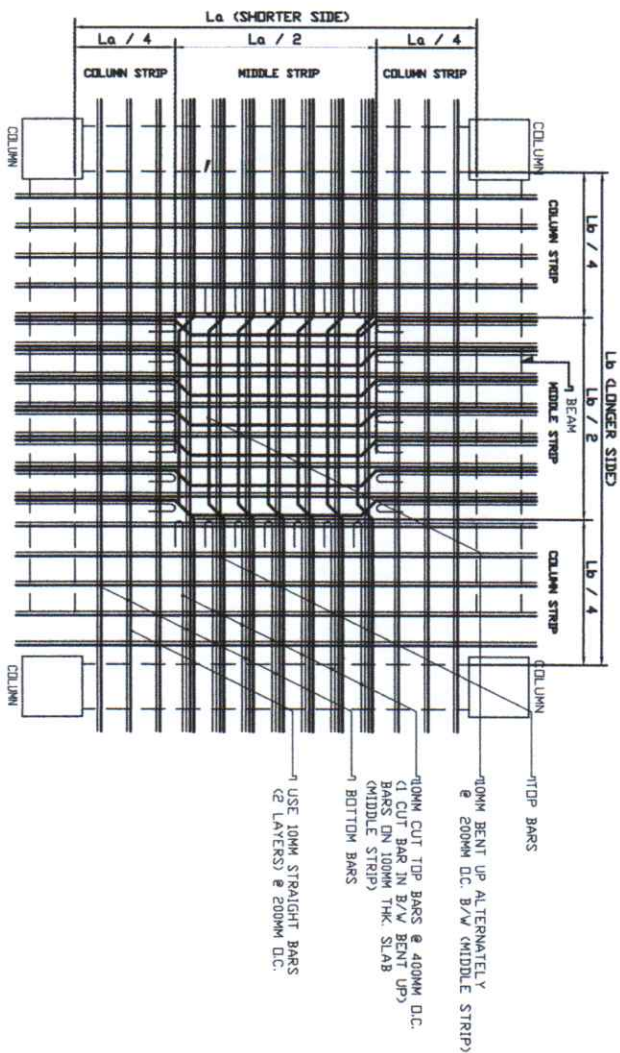
7 OF 8



COLUMN DETAIL

SCALE :

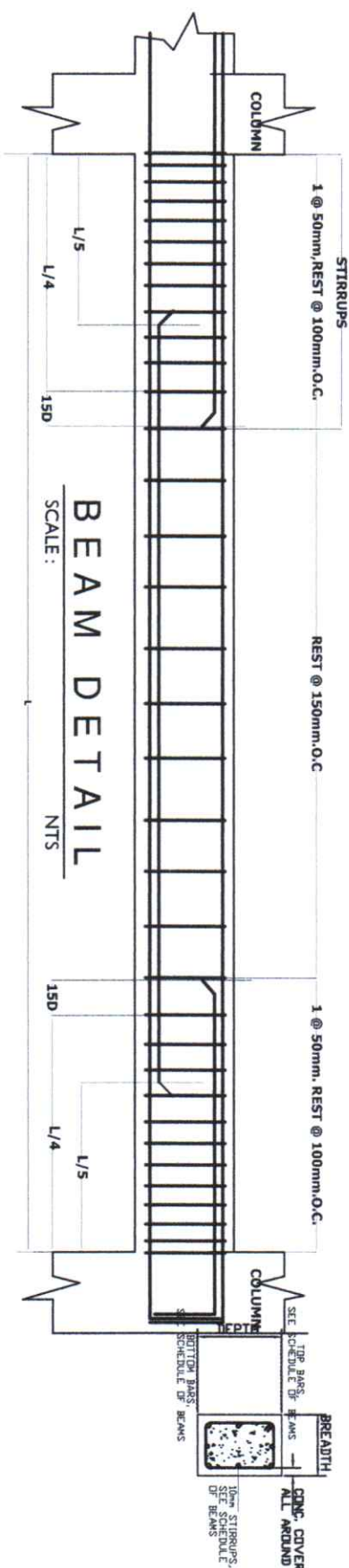
NTS



SLAB DETAIL

SCALE :

NTS



BEAM DETAIL

SCALE :

NTS



DEPT. DIVISION OFFICE
DAVAÓ CITY

IMPLEMENTING AGENCY

PROJECT TITLE & LOCATION

REPAIR AND REHABILITATION
OF SCHOOL BUILDINGS
STO. TOMAS NHS, STO. TOMAS
BAGUIO CITY

PREPARED BY:

ROSELYN B. DIMOG
ENGINEER I

CHECKED & REVIEWED BY:

JENNIFER B. ROLIDO
ENGINEER III

RECOMMENDING APPROVAL:

ARTHUR TONGAN
SCHOOL CHIEF

APPROVED BY:

MARIE CAROLYN B. VERANO, CESO V
SCHOOLS DIVISION SUPERINTENDENT

SHEET CONTENTS

AS SHOWN

SHEET NO.

8 OF 8

P-28-20