



DepEd
DIVISION OFFICE

REPAIR/REHABILITATION/IMPROVEMENT OF
SITY BCL AT KLAS ELEMENTARY SCHOOL, KLAS
BAGUIO CITY

Prepared by:
[Signature]
ROSELINDA DIMAS
DepEd Engineer

Checked by:
[Signature]
JENNIFER D. POLIDO
Engineer III

Recommending Approval by:
[Signature]
ARTHUR TIONGAN
SOD Chief

Approved by:
[Signature]
MARIE CARDIYN B. VERANO, CESO V
Schools Division Superintendent

AS SHOWN

SHEET NO.
1/3

IMPLEMENTING AGENCY

Project & Location

Prepared by:

Checked by:

Recommending Approval by:

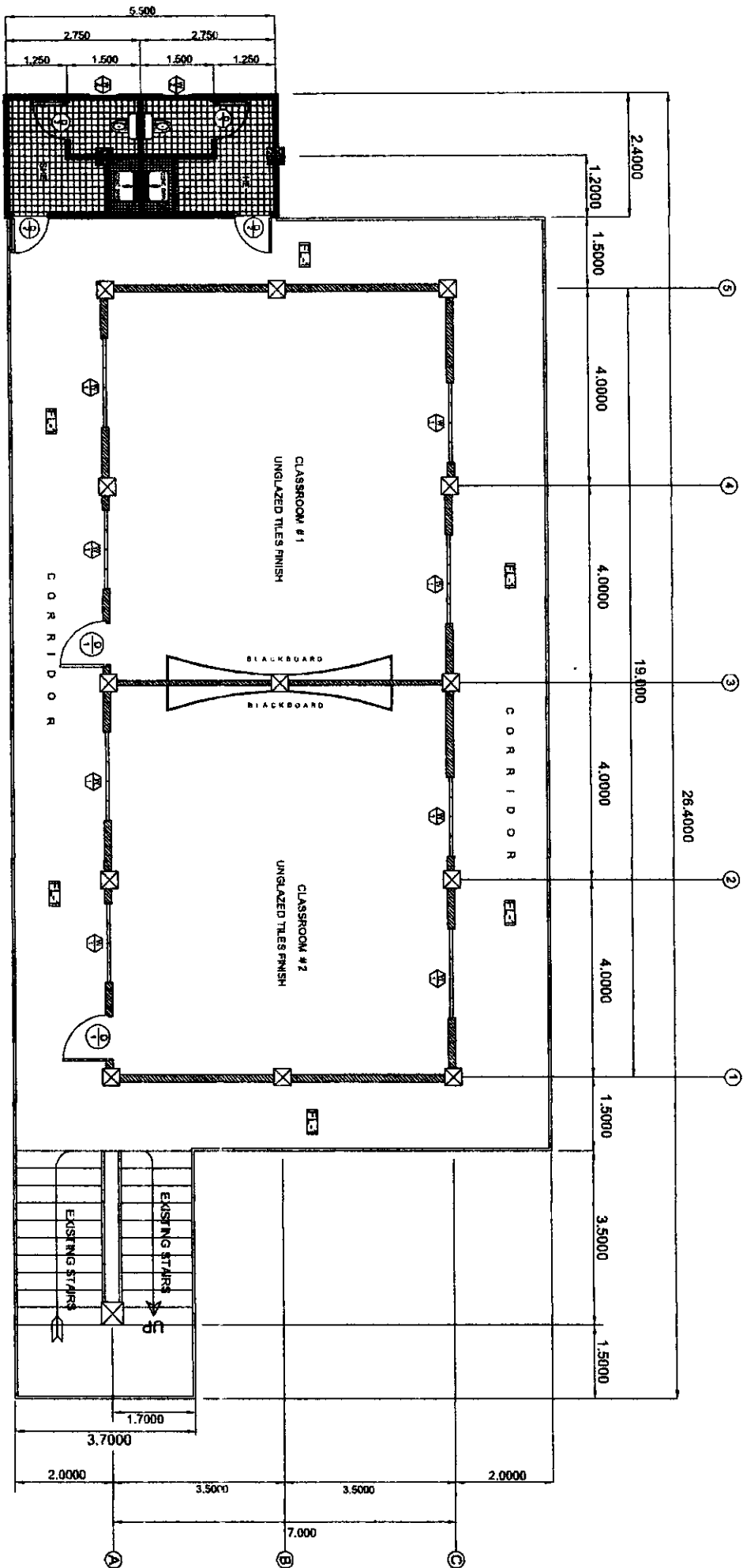
Approved by:

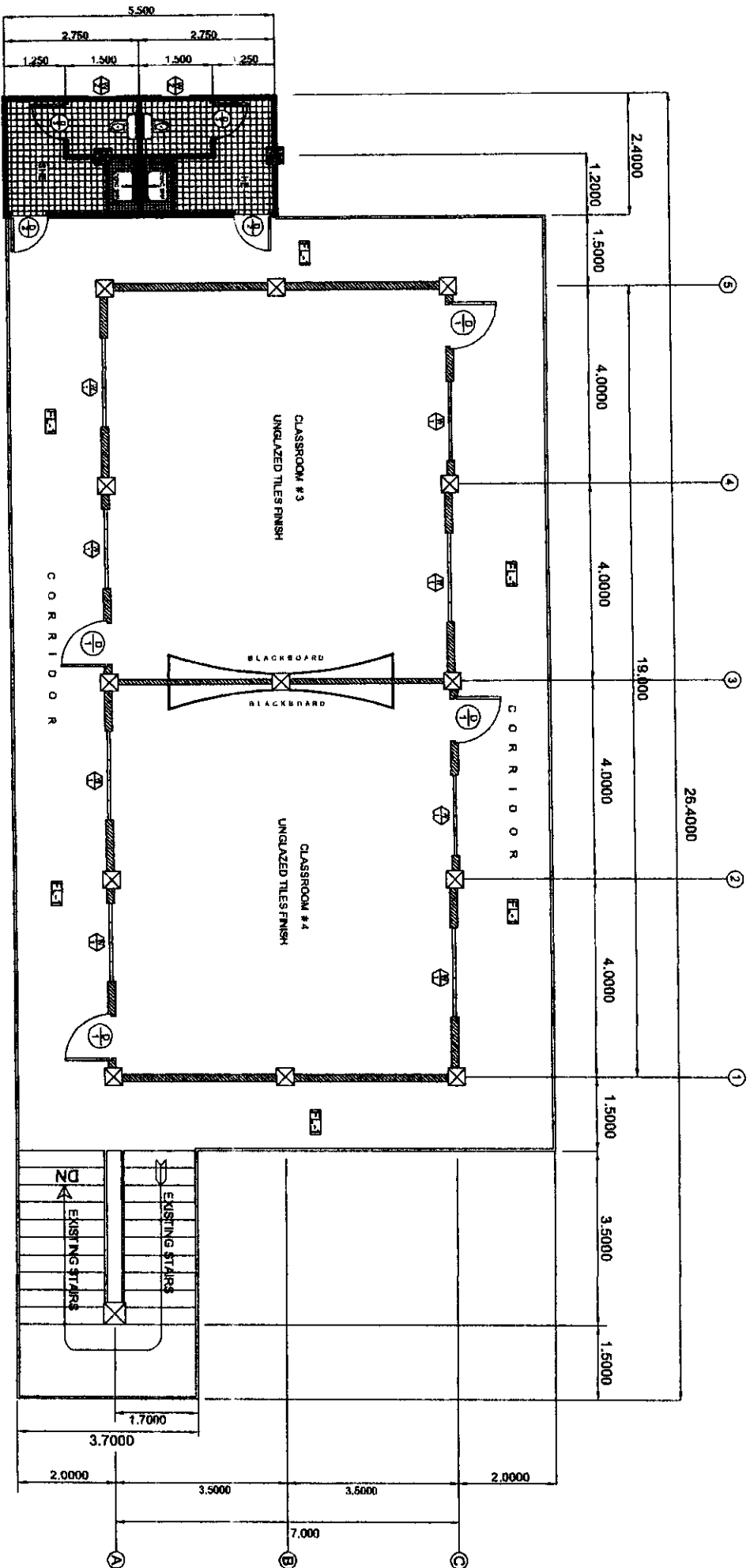
SHEET CONTENTS

SHEET NO.

FIRST FLOOR PLAN

SCALE 1:100

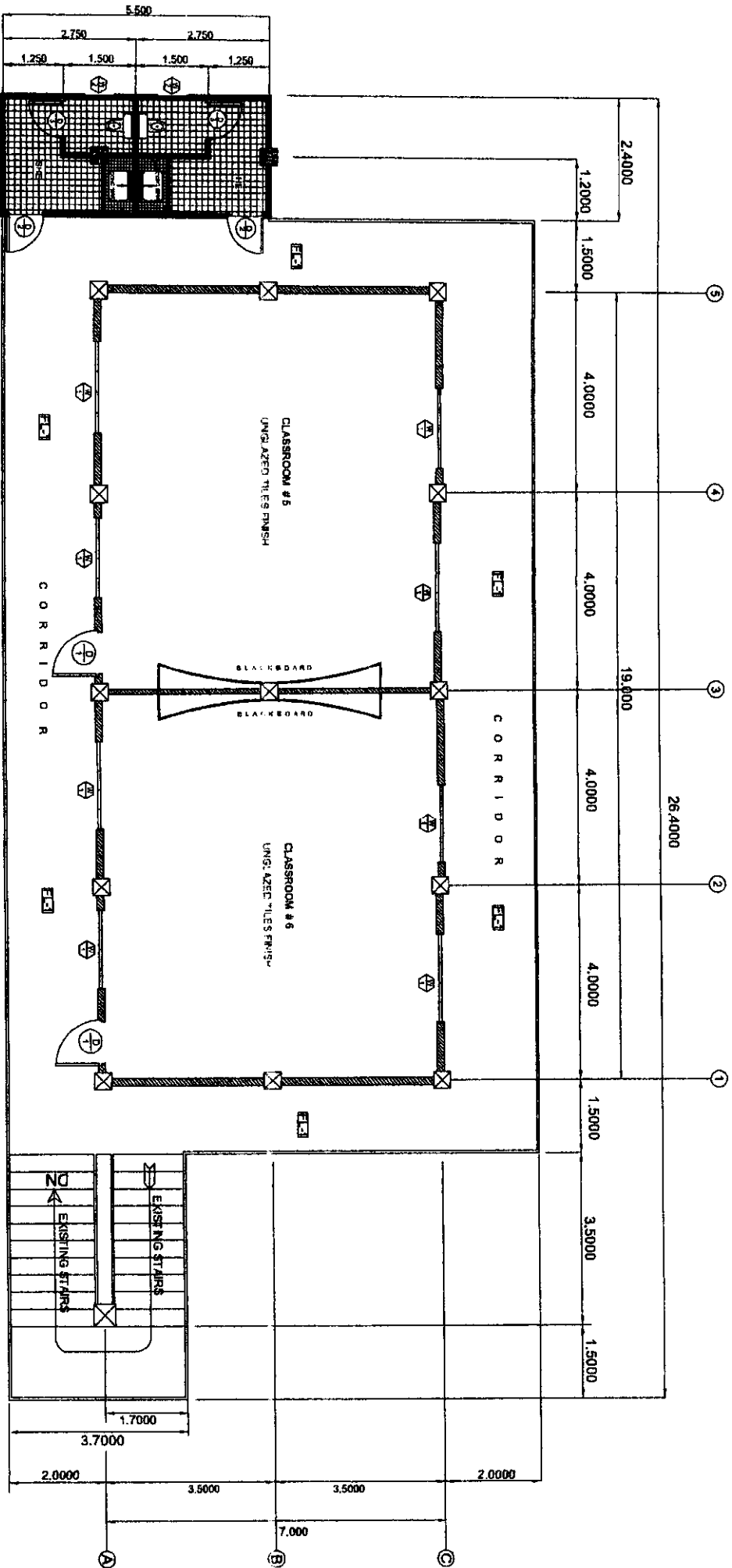




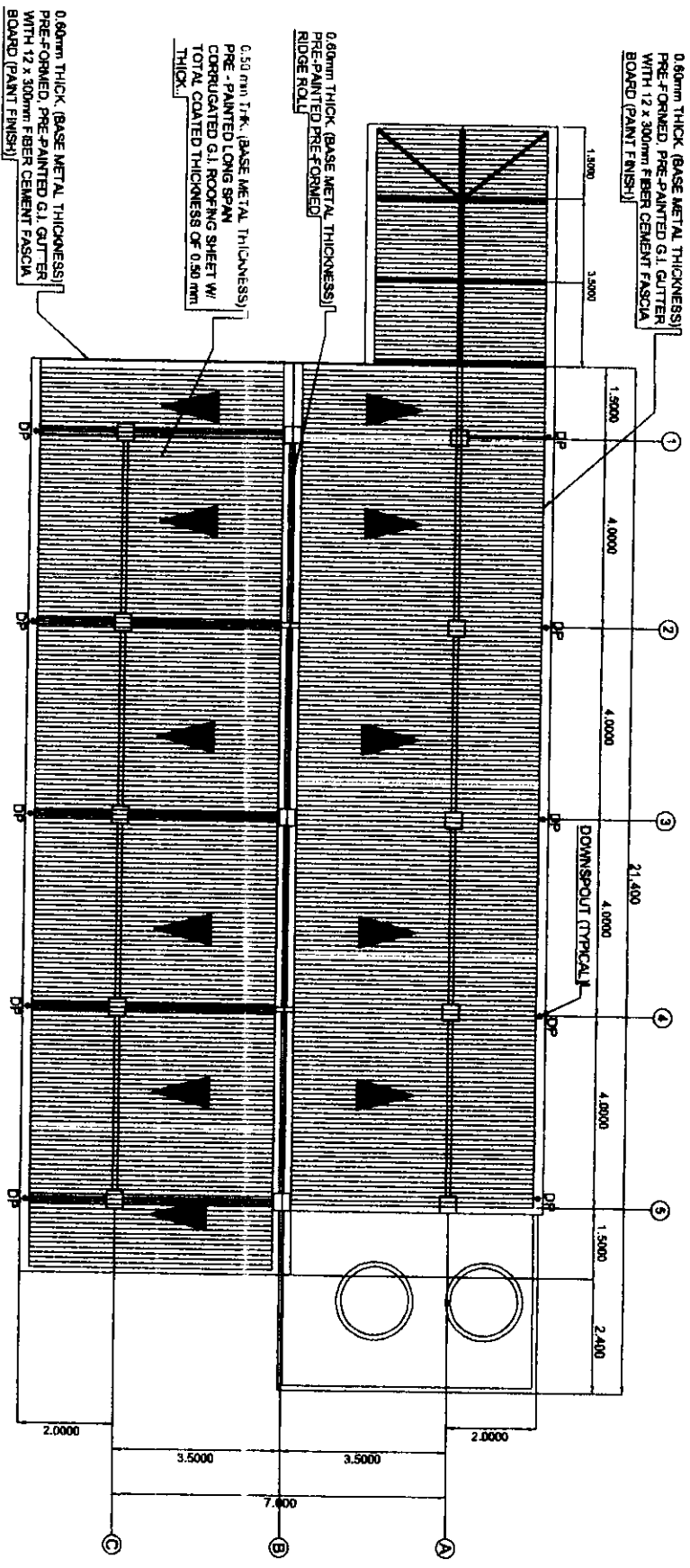
SECOND FLOOR PLAN

SCALE 1:100

IMPLEMENTING AGENCY	Project & Location	Prepared by:	Checked by:	Recommended Approval by:	Approved by:	SHEET CONTENTS	SHEET NO.
DEP ED BAGOIO CITY	REPAIR/REHABILITATION/IMPROVEMENT OF 387Y BCL AT KIAS ELEMENTARY SCHOOL, MAS BAGOIO CITY	ROSEL B. DIMOG DepEd Engineer	JENNIFER D. POLIDO Engineer III	ARTHUR TORRESAN SGOD Chief	MARIE CAROLYN B. VERANO, CESO V Schools Division Superintendent	AS SHOWN	2 13



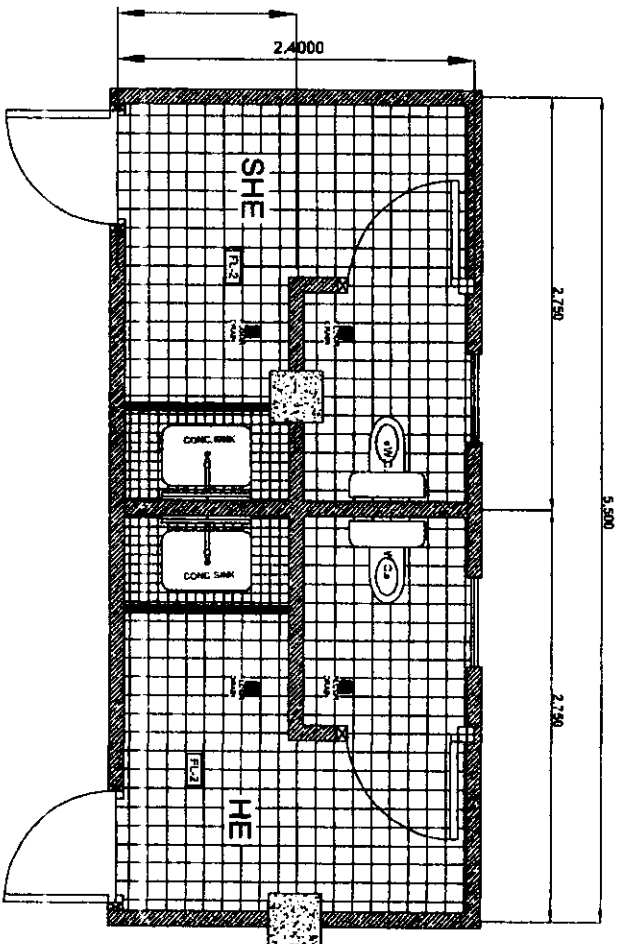
IMPLEMENTING AGENCY DepEd DEPED DIVISION OFFICE	Project & Location REPAIR/REHABILITATION/IMPROVEMENT OF SSTY RCL AT KIAS ELEMENTARY SCHOOL, KIAS BANGUO CITY	Prepared by: ROSEL M. A. DIMOG DepEd Engineer	Checked by: JENNIFER D. POLEDO Engineer III	Recommending Approval by: ARTHUR TONGAN SSGO Chief	Approved by: MARIE CAROLYN B. VERANO, CESO V Schools Division Superintendent	SHEET CONTENTS AS SHOWN	SHEET NO. 3 13
--	---	---	---	--	--	----------------------------	----------------------



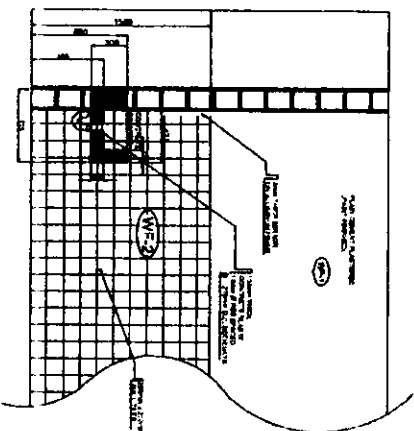
ROOF PLAN

SCALE 1:100

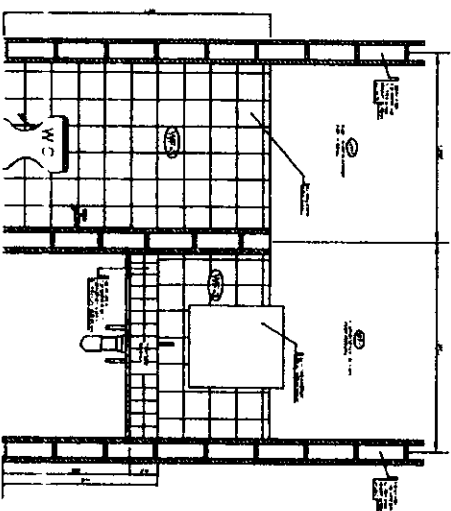
IMPLEMENTING AGENCY	Project & Location	Prepared by:	Checked by:	Recommending Approval by:	Approved by:	SHEET CONTENTS	SHEET NO.
DEPED BANGUO CITY DIVISION OFFICE	REPAIR/REHABILITATION/IMPROVEMENT OF BASTY BCL AT KAS ELEMENTARY SCHOOL, KAS BANGUO CITY	ROSE/MAE DINOG DepEd Engineer	JENNIFER D. POLIDO Engineer III	ARTHUR TIONGAN SGOD Chief	MARIE CAROLYN B. VERANO, CESO V Schools Division Superintendent (T-7), f.n.i	AS SHOWN	4 13



TOILET PLAN DETAIL
SCALE 1 : 100

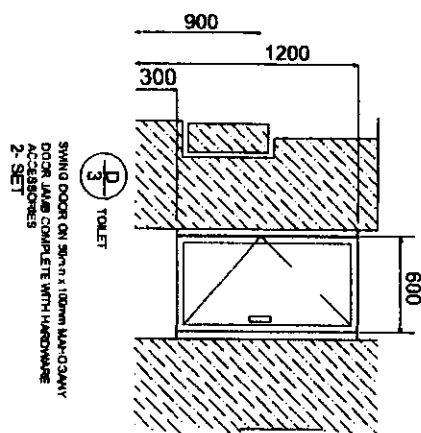
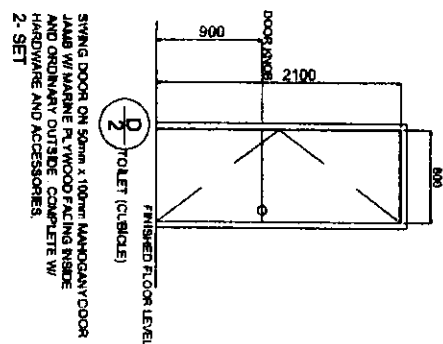
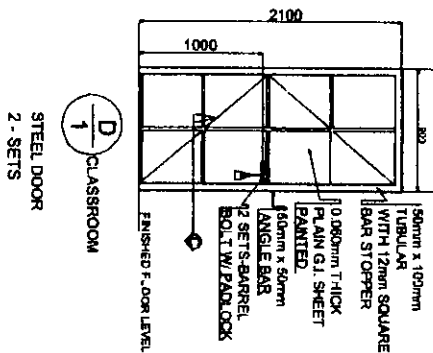


CONCRETE SINK SECTION DETAIL
SCALE 1 : 100



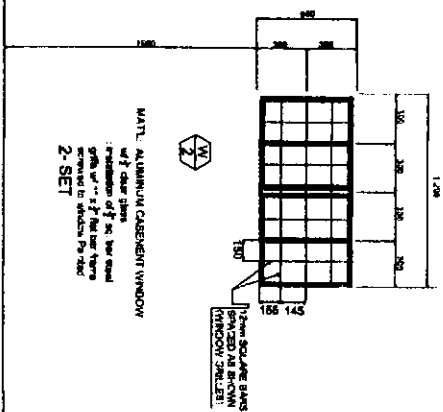
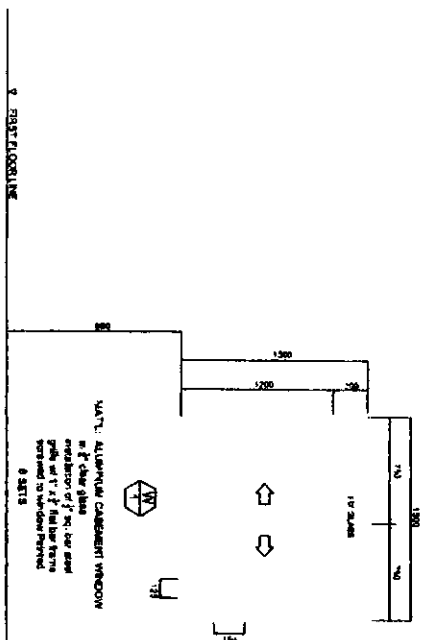
TOILET SECTION DETAIL
SCALE 1 : 100

IMPLEMENTING AGENCY	Project & Location	Prepared by:	Checked by:	Recommending Approval by:	Approved by:	SHEET CONTENTS	SHEET NO.
DEP ED BANGUO CITY DIVISION OFFICE	REPAIR/REHABILITATION/IMPROVEMENT OF SBSTY BCL AT KLAS ELEMENTARY SCHOOL, KLAS BANGUO CITY	ROSELYN A. DRACOS District Engineer	JENNIFER D. POLIDO Engineer III	ARTHUR TIDONGAN SGOD Chief	MARIE CAROLYN B. VERRANO, CESO V Schools Division Superintendent	AS SHOWN	5 13



DOOR SCHEDULE AND DETAILS

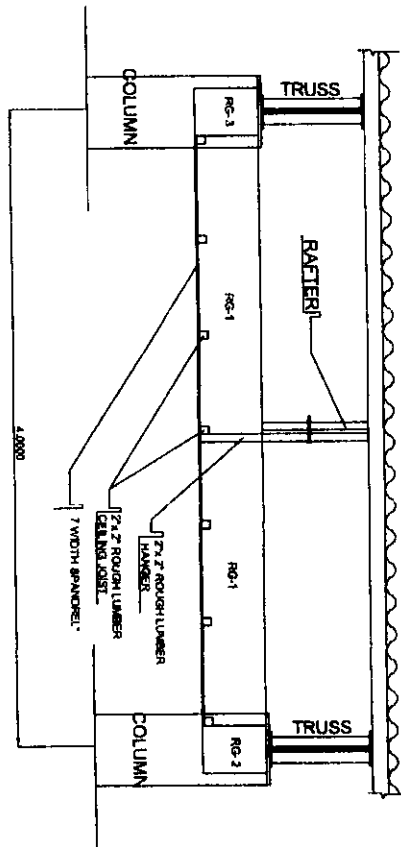
SCALE: 1/8" = 1'-0"



WINDOW SCHEDULE & DETAILS

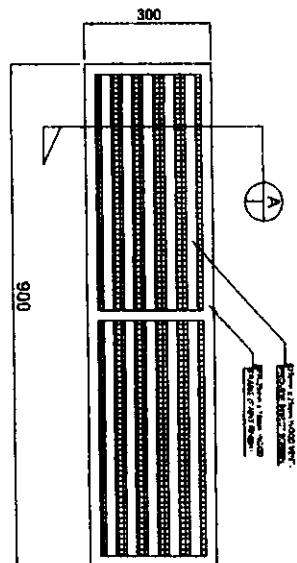
SCALE: 1/8" = 1'-0"

IMPLEMENTING AGENCY	Project & Location	Prepared by	Checked by	Recommending Approval by	Approved by	SHEET CONTENTS	SHEET NO.
DEPED BANGUO CITY DIVISION OFFICE	REPAIR/REHABILITATION/IMPROVEMENT OF BSTDY BCL AT KLAS ELEMENTARY SCHOOL, KLAS BANGUO CITY	ROSELYN B. DIMOG DepEd Eng new	JESSE D. PALIDO Engineer III	ARTHUR TONGSAN SGSO Chief	MARIE CAROLYN B. VERANO, CESO V Schools Division Superintendent	AS SHOWN	6/13



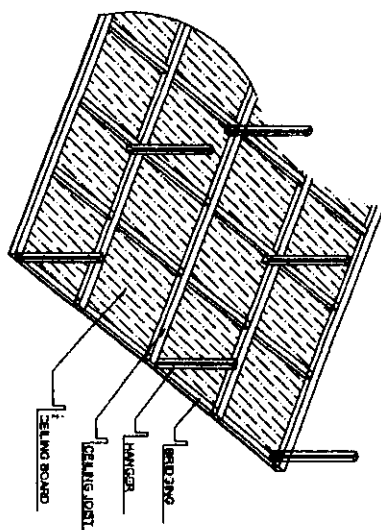
CEILING SECTION DETAILS

SCALE 1 : 1/4"



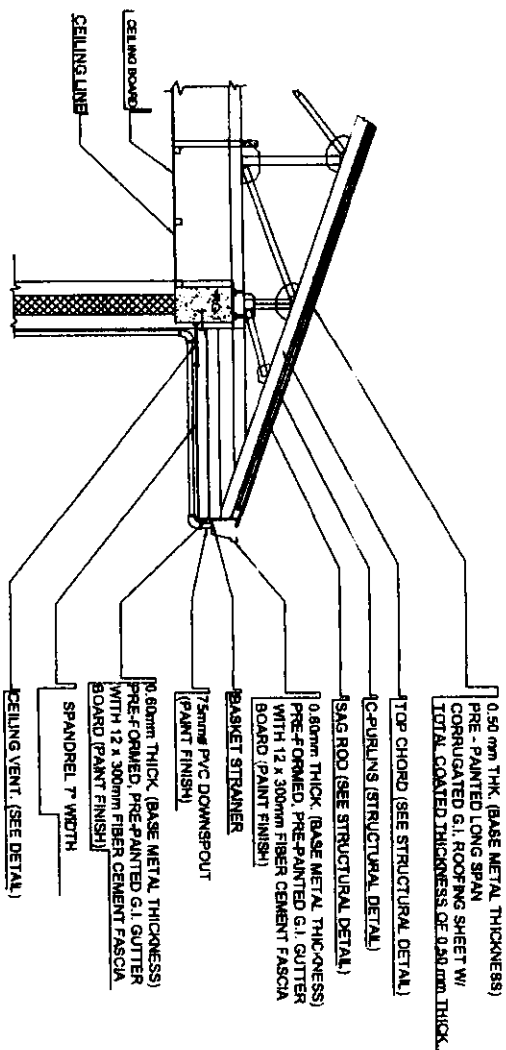
CEILING VENT. PLAN DETAILS

SCALE 1 : 1/4"



CEILING DETAIL

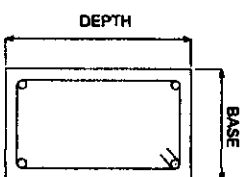
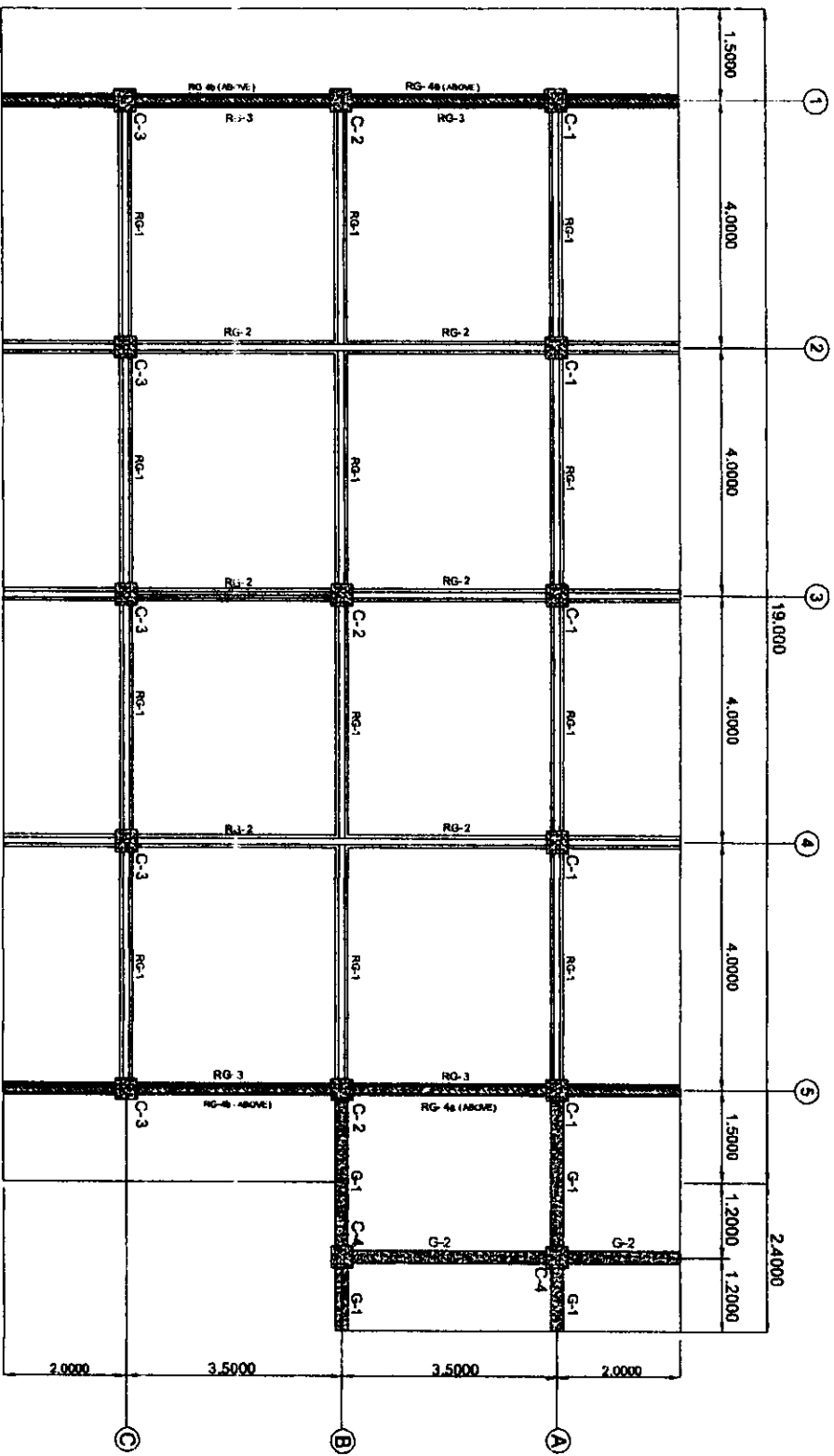
SCALE 1 : 1/4"



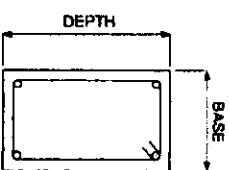
CEILING EAVES SECTION DETAILS

SCALE 1 : 1/4"

IMPLEMENTING AGENCY	Project & Location	Prepared by:	Checked by:	Recommending Approval by:	Approved by:	SHEET CONTENTS	SHEET NO.
DEPT. OF PUBLIC WORKS DIVISION OFFICE	REPAIR/REHABILITATION/IMPROVEMENT OF BRTY BCL AT KIAS ELEMENTARY SCHOOL, KIAS BAGUIO CITY	ROSELYN B. DIMAS Deputy Engineer	JENNIFER D. POLEDO Engineer III	ANTHONY TIOGAN SGOD Chief	MARIE CAROLYN B. VERANO/CSO V School Division Superintendent	AS SHOWN	7 13



S
2 24
TYPE OF STIRRUPS
SCALE NTS.



1 - 1 @ 50mm, 9 @ 100mm, 5 @ 150mm,
Rest @ 170mm TO Midspan

ROOF FRAMING PLAN @ BOTTOM CHORD LEVEL

SCALE 1:100

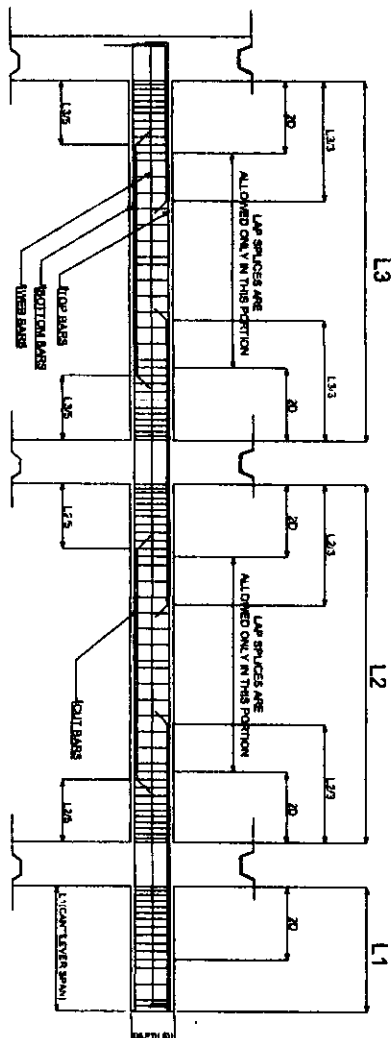
STIRRUPS CONFIGURATION
SCALE NTS.

MARKETING AGENCY	Project & Location	Prepared by:	Checked by:	Recommending Approval by:	Approved by:	SHEET CONTENTS	SHEET NO.
DEP ED BAGO CITY DIVISION OFFICE	REPAIR/REHABILITATION/IMPROVEMENT OF STY RCL AT KLAS ELEMENTARY SCHOOL, KLAS BAGO CITY	ROSE ANNE OMAG DepEd Engineer	JENIFER D. POLIDO Engineer III	ARTHUR TONGAN SGO Chief	MARIE CARDOLYN B. VERANO, CESO V School Division Superintendent	AS SHOWN	8 13

SCHEDULE OF ROOF BEAMS															
FLOOR LEVEL		BEAM		BEAM DIMENSIONS		S T E E L R E I N F O R C E M E N T S								STIRRUPS 10mm Ø	
MARK		(mm)		REBARS (mm Ø)		LEFT		ABOVSAN		RIGHT		CONFIGURATION		TYPE	
		B	D			TOP	BOTTOM	TOP	BOTTOM	TOP	BOTTOM				
ROOF	G - 1	300	400		20	4	2	2	4	4	2				A
	G - 2	300	400		20	4	2	2	4	4	2				A
	G - 1	300	400		18	3	3	3	3	3	3				A
	G - 2	200	400		18	3	2	2	3	3	2				A
	G - 3	200	400		18	3	2	2	3	3	2				A
	G - 4a	200	400		18	3	2	2	3	3	2				A
RG - 4b	200	400		18	3	2	2	3	3	2				A	

SCHEDULE OF ROOF BEAMS

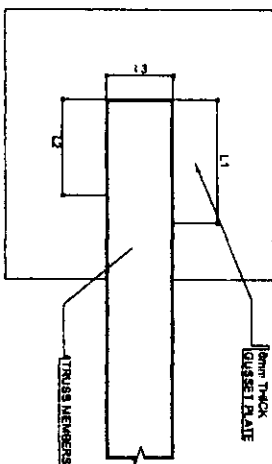
SCALE NTS.



ROOF BEAM ELEVATION

SCALE NTS.

SCHEDULE OF TRUSSES MEMBERS AND WELDS									
MARK	NAME	SIZE		WELDS (mm)					REMARKS
		TRUSS MEMBERS		GUSSET PLATE THICKNESS	LENGTH				
		mm				L1	L2	L3	
TC	TOP CHORD	2 - 8mm x 50mm x 50mm	ANGLE BAR	8	F	U	L	L	BACK TO BACK
BC	BOTTOM CHORD	2 - 8mm x 50mm x 50mm	ANGLE BAR	8	F	U	L	L	BACK TO BACK
V1	VERTICAL WEB MEMBERS	2 - 8mm x 50mm x 50mm	ANGLE BAR	8	125	100	50		BACK TO BACK
V2	VERTICAL WEB MEMBERS	2 - 4.5mm x 50mm x 50mm	ANGLE BAR	6	100	75	50		BACK TO BACK
D1	DIAGONAL WEB MEMBERS	2 - 8mm x 50mm x 50mm	ANGLE BAR	8	125	100	50		BACK TO BACK
D2	DIAGONAL WEB MEMBERS	2 - 4.5mm x 50mm x 50mm	ANGLE BAR	6	100	75	50		BACK TO BACK
H1	HORIZONTAL WEB MEMBERS	2 - 4.5mm x 50mm x 50mm	ANGLE BAR	8	100	75	50		BACK TO BACK
P1	PURLINS	2.00mm x 20mm x 50mm x 150mm	LC SH-STEEL						WITH 2 LINES 12mm Ø SLAG
FP	FILLER PLATES	8mm x 75mm x 75mm	M5 PLATE	6					WELDED @ END OF WEB MEMBERS



SCHEDULE OF TRUSSES MEMBERS AND WELDS

SCALE NTS.

TRUSSES AND WELD DETAILS

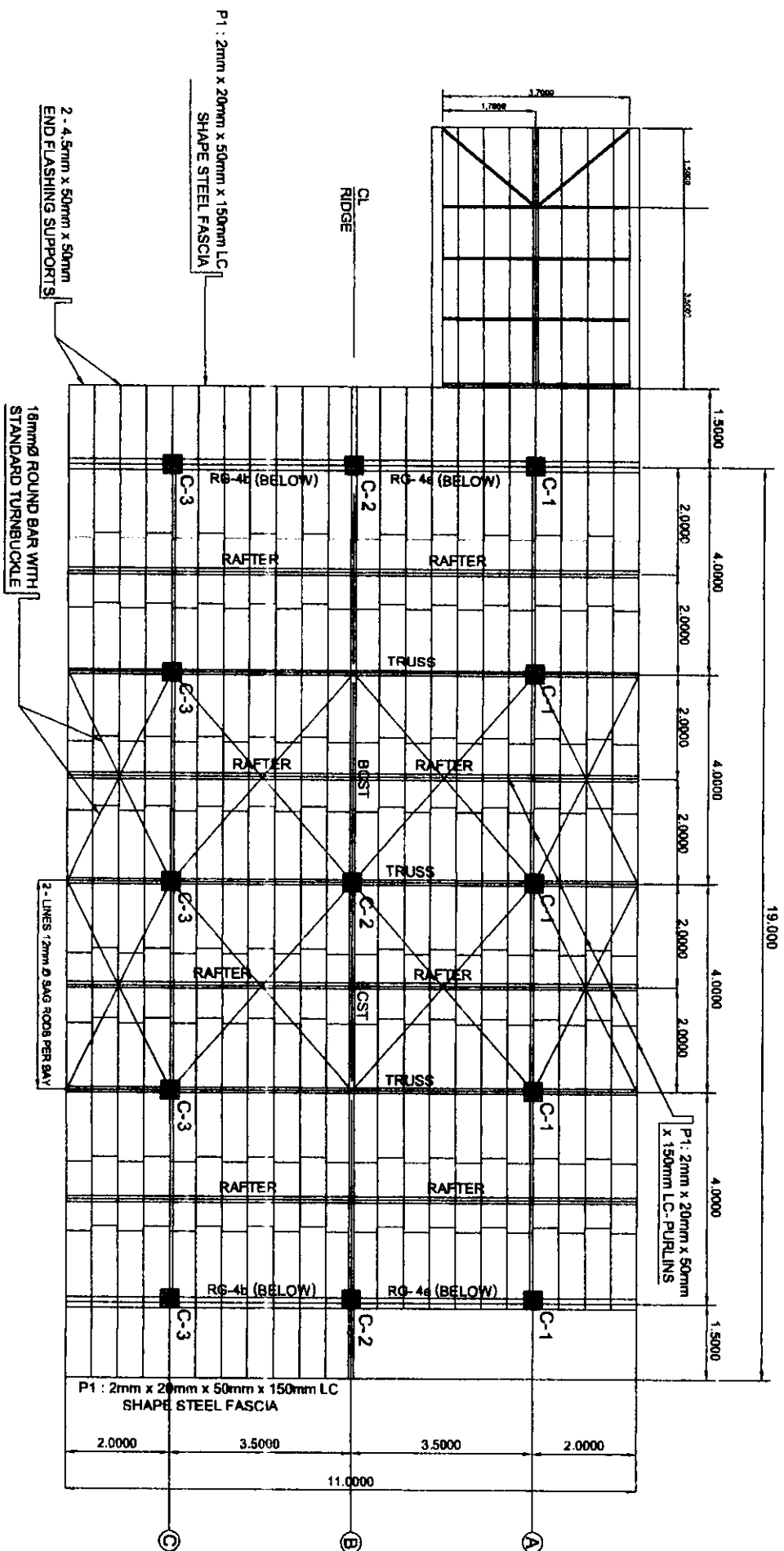
SCALE NTS.

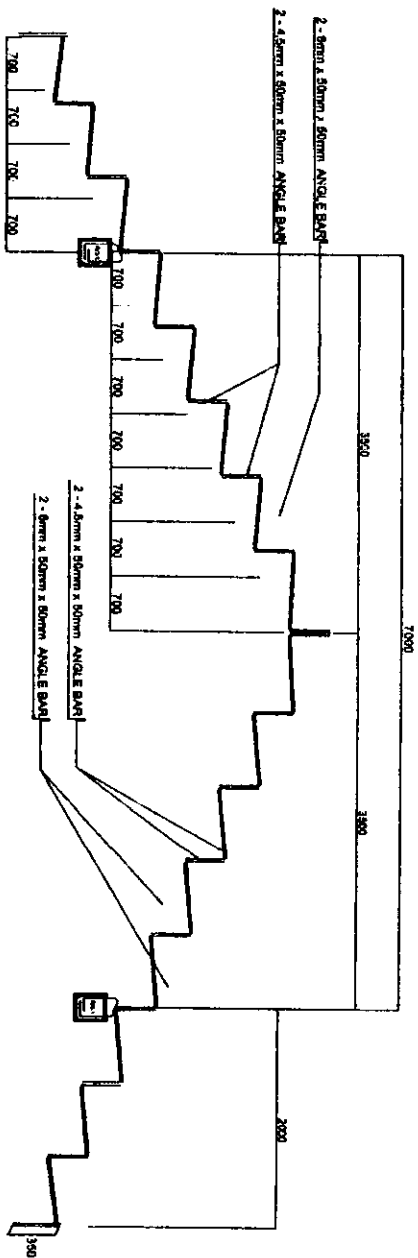
IMPLEMENTING AGENCY	Project & Location	Prepared by:	Checked by:	Recommending Approval by:	Approved by:	SHEET CONTENTS	SHEET NO.
DEPARTMENT OF EDUCATION DIVISION OFFICE	REPAIR/REHABILITATION/IMPROVEMENT OF SSTY BCL AT KAS ELEMENTARY SCHOOL, KAS BAGUIO CITY	ROSE/AS DINGOG Design Engineer	JENNIFER D. POLIDO Engineer III	ARHUP TONGAN SGOD Chief	MARIE CAROLYN B. VERANO CESO V Schools Division Superintendent	AS SHOWN	2 13

IMPLEMENTING AGENCY DEPT 23 BAGUIO CITY DIVISION OFFICE	Project & Location REPAIR/REHABILITATION/IMPROVEMENT OF DISTRICT SCL. AT KLAS ELEMENTARY SCHOOL, KLAS BAGUIO CITY	Prepared by: ROSELYN B. DIMOG Depled Engineer	Checked by: JENNIFER D. POLIDO Engineer III	Recommending Approval by: ARTHUR TONGAN SGOO Chief	Approved by: MARIE CAROLYN B. VERANO, CESO V Schools Division Superintendent \$126.121	SHEET CONTENTS AS SHOWN	SHEET NO. 13
---	--	---	---	--	---	--------------------------------	---------------------

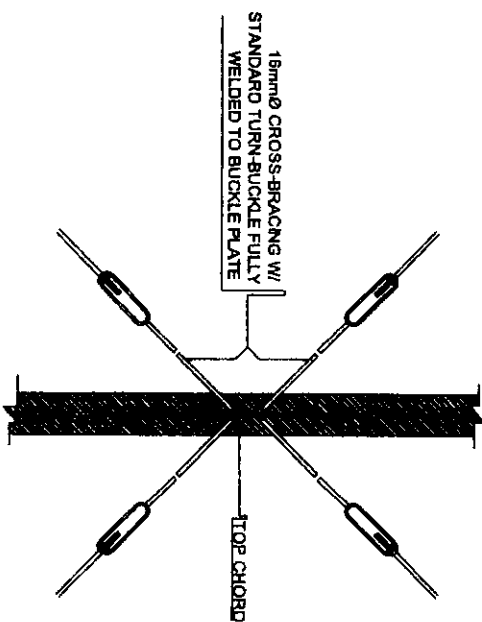
ROOF FRAMING PLAN @ TOP CHORD LEVEL

SCALE 1:100

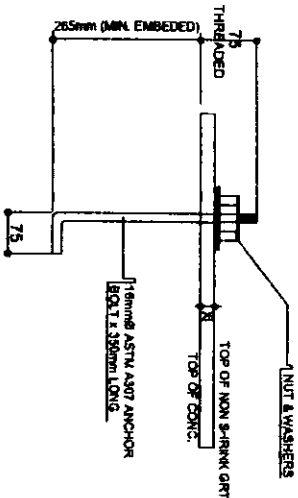




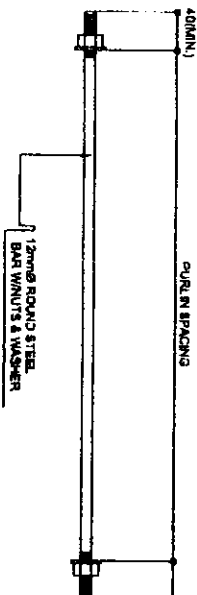
S RAFTER SECTION DETAILS
14/24 SCALE 1:100



DETAIL CONNECTION OF CROSS BRACING

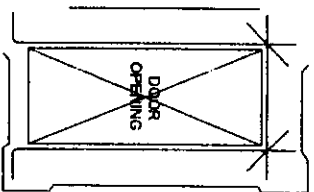
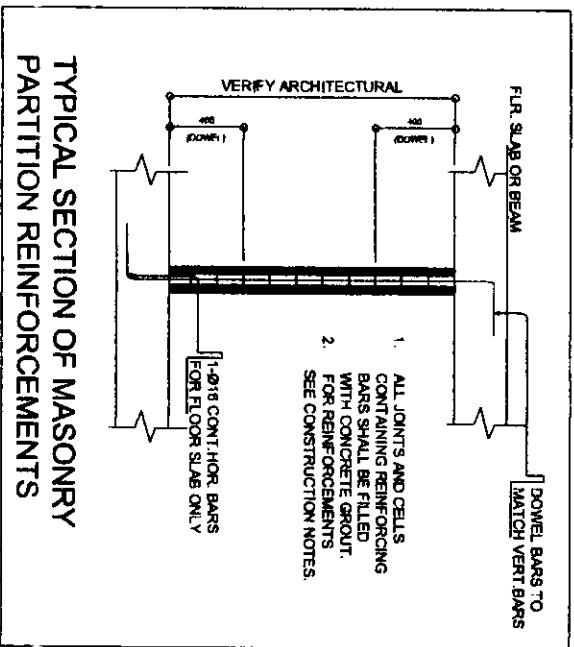


ANCHOR BOLT DETAIL SAG ROD DETAIL

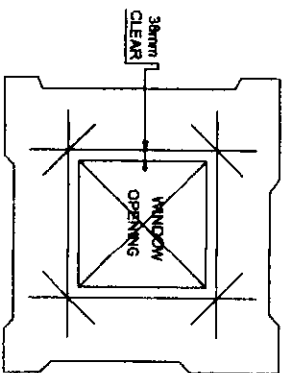


IMPLEMENTING AGENCY	Project & Location	Prepared by:	Checked by:	Recommendation Approved by:	Approved by:	SHEET CONTENTS	SHEET NO.
DEPT. OF BANGAL CITY DIVISION OFFICE	REPAIR/REHABILITATION/IMPROVEMENT OF ASTY ECL. AT KIAS ELEMENTARY SCHOOL, KIAS BANGAL CITY	ROSELYN A. DRAGO Design Engineer	JENNIFER D. POLIDO Engineer II	ARTHUR TIONGAN SGOD Chief	MARIE CAROLYN B. VERANO, CESO V School Division Superintendent	AS SHOWN	11 13

GENERAL CONSTRUCTION NOTES

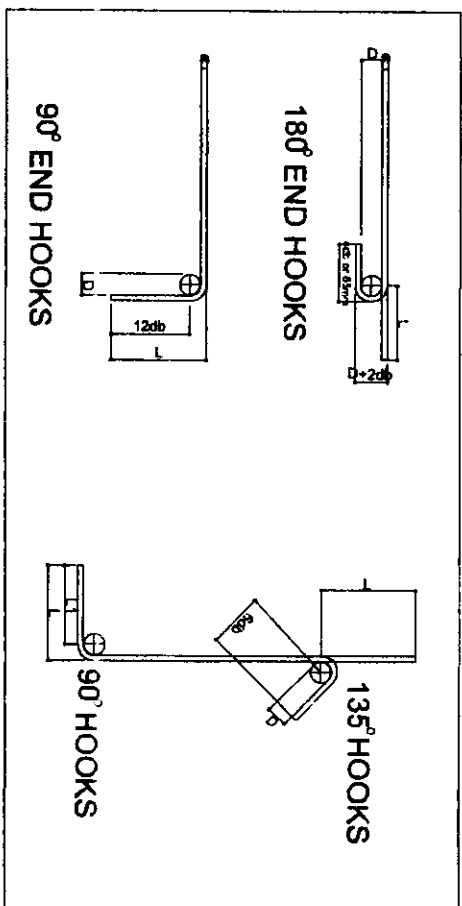


NOTE:
PROVIDE THESE ADDITIONAL BARS FOR ALL OPENINGS PLUS BARS (NOT SHOWN) PARALLEL TO SIDE OF OPENING EQUAL TO THE NUMBER OF TERMINATED BARS AT OPENING. SEE ARCHITECTURAL & MECHANICAL PLANS FOR SLAB OPENING LOCATION.



TYPICAL EXTERIOR WINDOW & DOOR OPENING

- NOTES OF STIRRUPS
1. ALL REINFORCEMENT SHALL BE BENT UNLESS OTHERWISE PERMITTED BY THE STRUCTURAL ENGINEER.
 2. REINFORCEMENT PARTIALLY EMBEDDED IN CONCRETE SHALL NOT BE FILLED BENT, EXCEPT AS SHOWN IN THE DESIGN DRAWINGS OR PERMITTED BY THE STRUCTURAL ENGINEER.
 3. TIES AND CLOSE STIRRUPS MUST BE BENT AT 135 DEGREES



MAIN BAR END HOOKS (ALL GRADES)				
BAR SIZE (DEFORDED)	DIAMETER (mm)	180° HOOK	90° HOOK	
10mm Ø	60	75	125	150
12mm Ø	75	100	150	200
16mm Ø	95	125	175	250
20mm Ø	115	150	200	300
25mm Ø	150	200	250	450
28mm Ø	240	300	350	550
32mm Ø	300	385	450	600

STIRRUPS AND TIE HOOKS (ALL GRADES)				
BAR SIZE (DEFORDED)	DIAMETER (mm)	180° HOOK	90° HOOK	
10mm Ø	40	125	95	100
12mm Ø	50	165	115	115
16mm Ø	65	200	140	180
20mm Ø	115	260	165	300
25mm Ø	150	365	230	405

IMPLEMENTING AGENCY

Project & Location

Prepared by:

Checked by:

Recommending Approval by:

Approved by:

SHEET CONTENTS

SHEET NO.

DEPT. OF EDUCATION
DIVISION OFFICE

REPAIR/REHABILITATION/IMPROVEMENT OF
8371 BCL AT KINS ELEMENTARY SCHOOL, KAS
BAGUIO CITY

ROSELYN S. DIMAS
Design Engineer

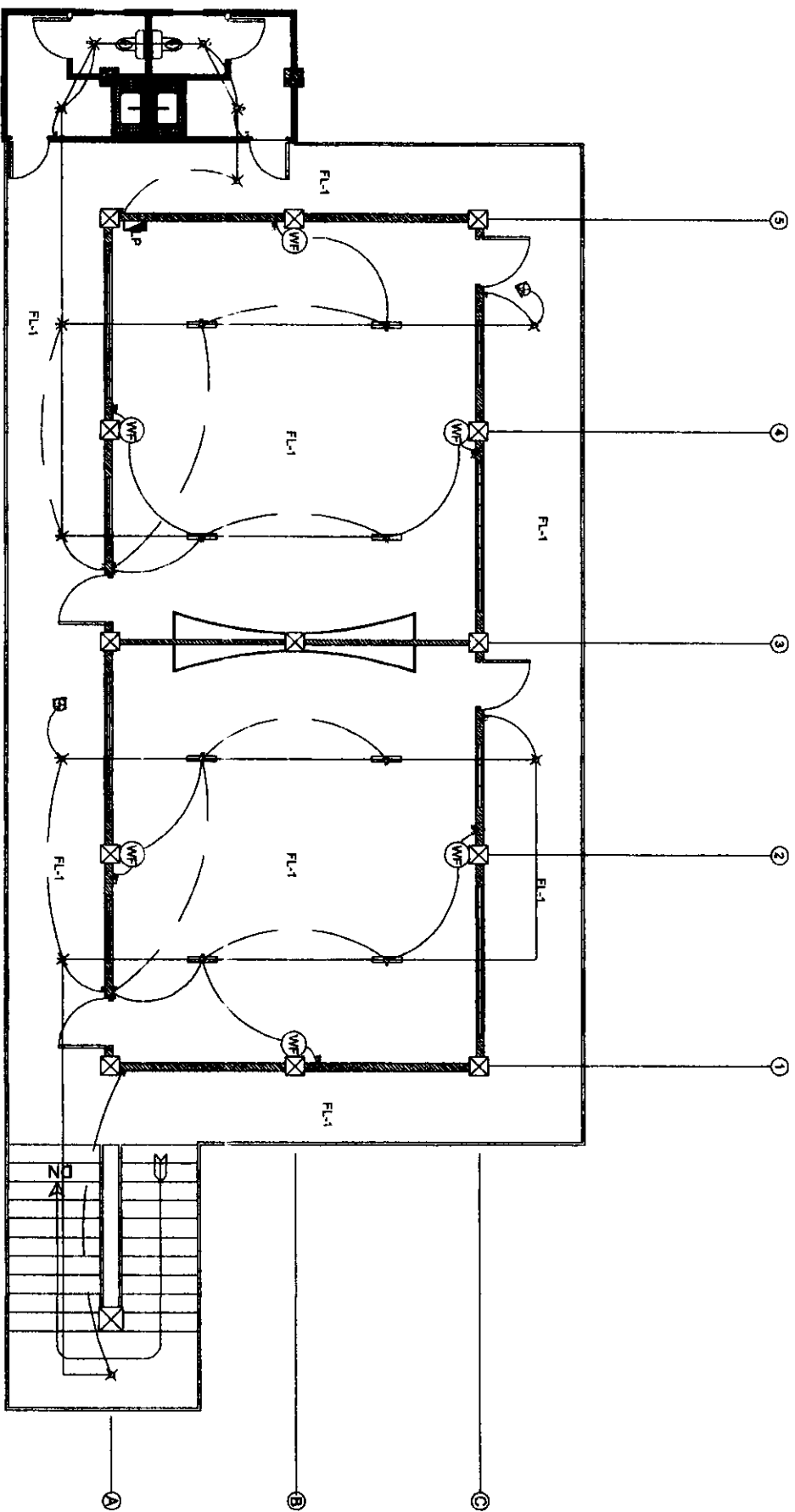
JENNIFER D. POLIDO
Engineer III

ARTHUR TIONGAN
SGOD Chief

MARIE CALICUTAN B. VERANO CESO V
Schools Division Superintendent

AS SHOWN

12
13



LIGHTING LAYOUT PLAN

SCALE NTS.

IMPLEMENTING AGENCY	Project & Location	Prepared by:	Checked by:	Recommending Approval by:	Approved by:	SHEET CONTENTS	SHEET NO.
DPP ED BAKING CITY DIVISION OFFICE	REPAIR/REHABILITATION/IMPROVEMENT OF 35TH SCH. AT KIAS ELEMENTARY SCHOOL, KIAS BAKING CITY	ROSELYN B. CHAMOS Designer	JENNIFER D. POLDO Engineer III	ARTHUR TONGAN SOD Chief	MARIE CARDOLYN B. VERANO, CESO V Schools Division Superintendent STC 121	AS SHOWN	13